



## PRETTY 2 ROOMS NEAR THE CASINO

Price on request



### DESCRIPTIVE :

Delightful 2 ROOM apartment, completely renovated and converted into a loft, in a prestigious residence on the edge of the Casino gardens and the Principality's most prestigious hotels, with 24-hour caretaker, a beautiful heated indoor swimming pool that operates all year round, a sauna and a gym.

With a total surface area of 54 M2, it comprises an entrance hall, a living room opening onto a beautiful loggia, a bedroom, a full shower room, a fully-equipped open-plan kitchenette and fitted wardrobes.

It has a pleasant enclosed veranda terrace with a total surface area of 13 M2 overlooking the Casino gardens.

Sold with a cellar and parking space.

**REF: VM2108**

### DETAILS



\*54 m<sup>2</sup>



13 m<sup>2</sup>



New



Facing east



Casino , Gardens view

\*marketable surface area

This document does not form part of any offer or contract. All measurements, areas and distances are approximate. The information and plans contained herein are believed to be correct, however, their accuracy is not guaranteed. The photographs show only certain parts of the property at the time they were taken. This offer is subject to change of price or other conditions, without prior notice.



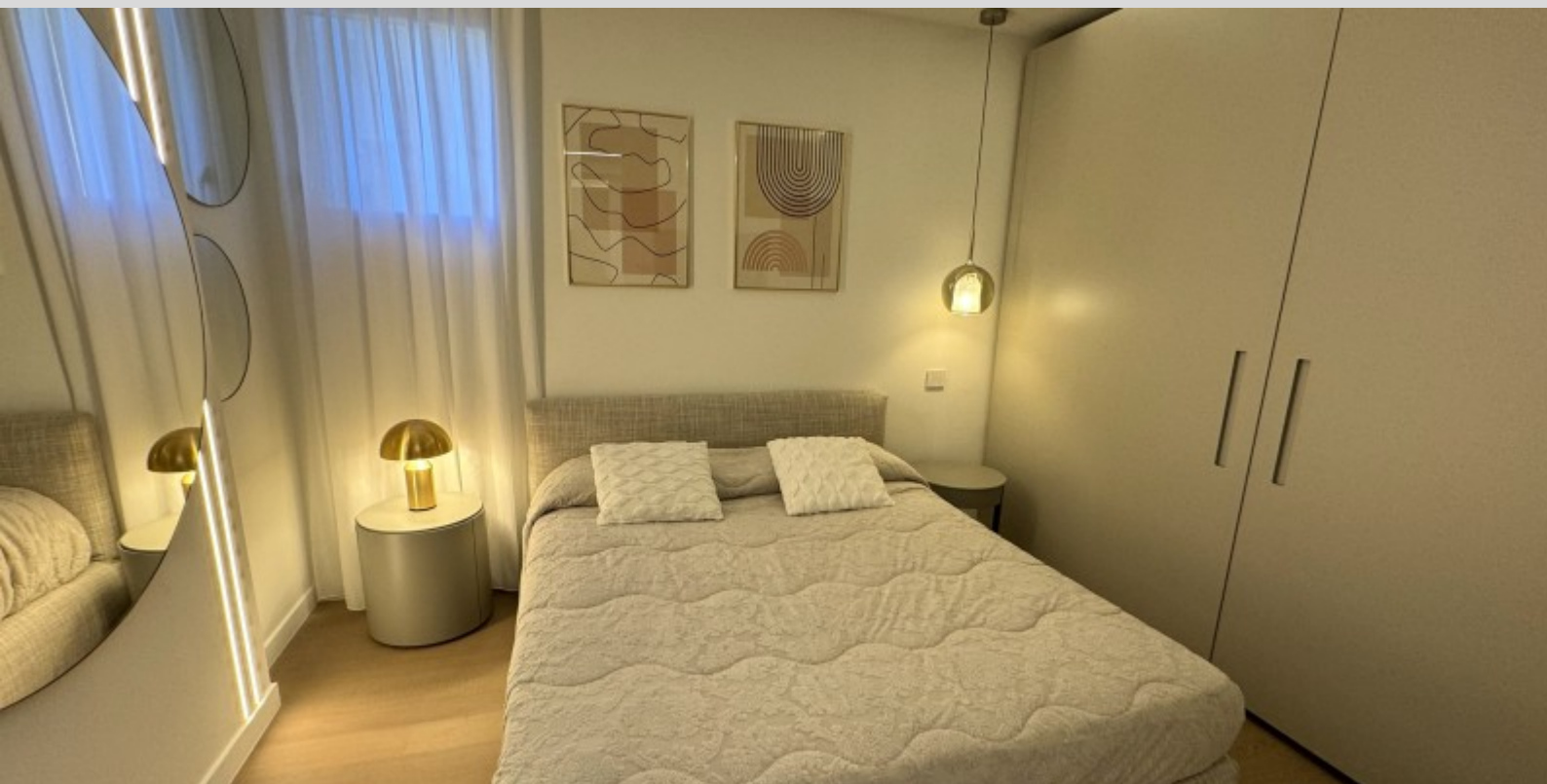
PRETTY 2 ROOMS NEAR THE CASINO







PRETTY 2 ROOMS NEAR THE CASINO







PRETTY 2 ROOMS NEAR THE CASINO





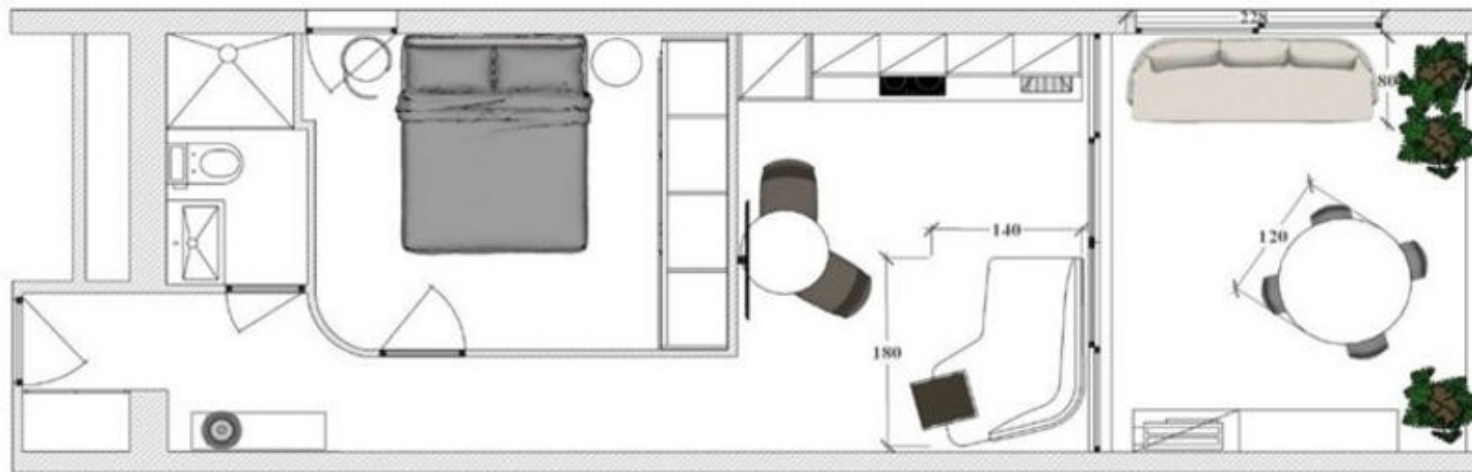
PRETTY 2 ROOMS NEAR THE CASINO





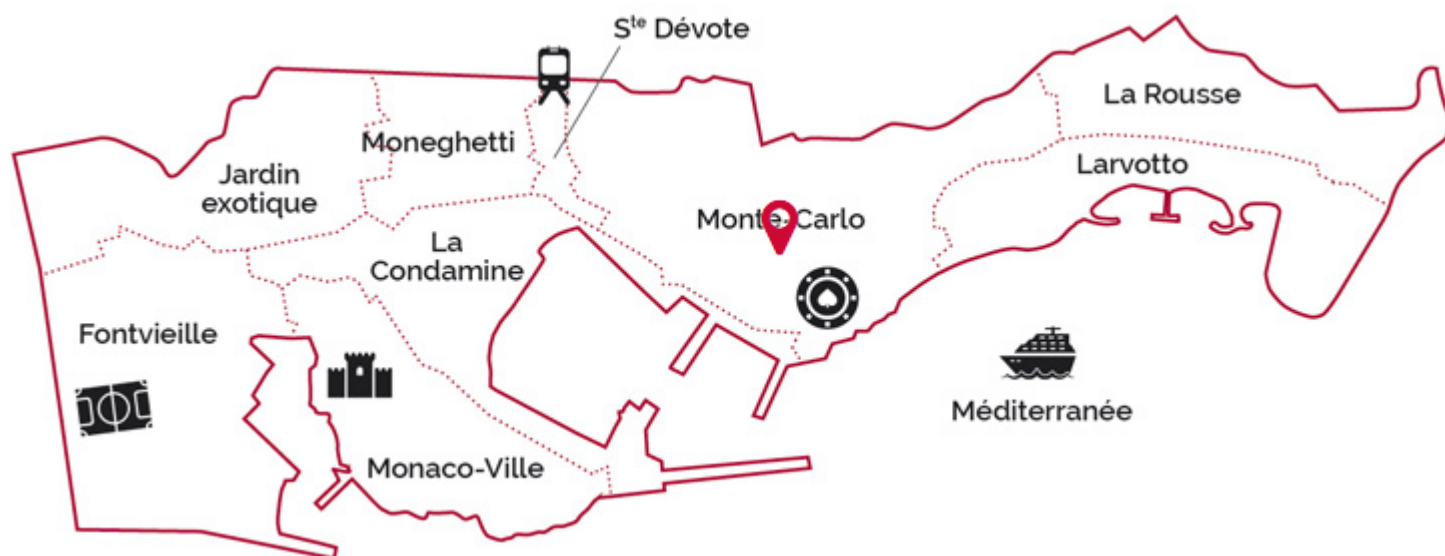


PRETTY 2 ROOMS NEAR THE CASINO





PRETTY 2 ROOMS NEAR THE CASINO



legal This document does not form part of any offer or contract. All measurements, areas and distances are approximate. The information and plans contained herein are believed to be correct, however, their accuracy is not guaranteed. The photographs show only certain parts of the property at the time they were taken. This offer is subject to change of price or other conditions, without prior notice.