



SPACIOUS STUDIO FACING THE PORT OF FONTVIEILLE

4.300 €/month



DESCRIPTIVE :

Beautiful STUDIO located in a small residence in Fontvieille Village, near the Shopping Center and the Port.

The apartment with a total area of 72 SQ.M consists of: entrance hall with cupboards, main room with loggia, fitted kitchen, full bathroom.

It has a 26 SQ.M loggia with a view of the Port of Fontvieille.

Rented with a cellar and two parking spaces.

REF: LM1334

DETAILS



*72 m²



26 m²



New



Facing south



Port view

CHARGES

360 €/mois

*marketable surface area

This document does not form part of any offer or contract. All measurements, areas and distances are approximate. The information and plans contained herein are believed to be correct, however, their accuracy is not guaranteed. The photographs show only certain parts of the property at the time they were taken. This offer is subject to change of price or other conditions, without prior notice.



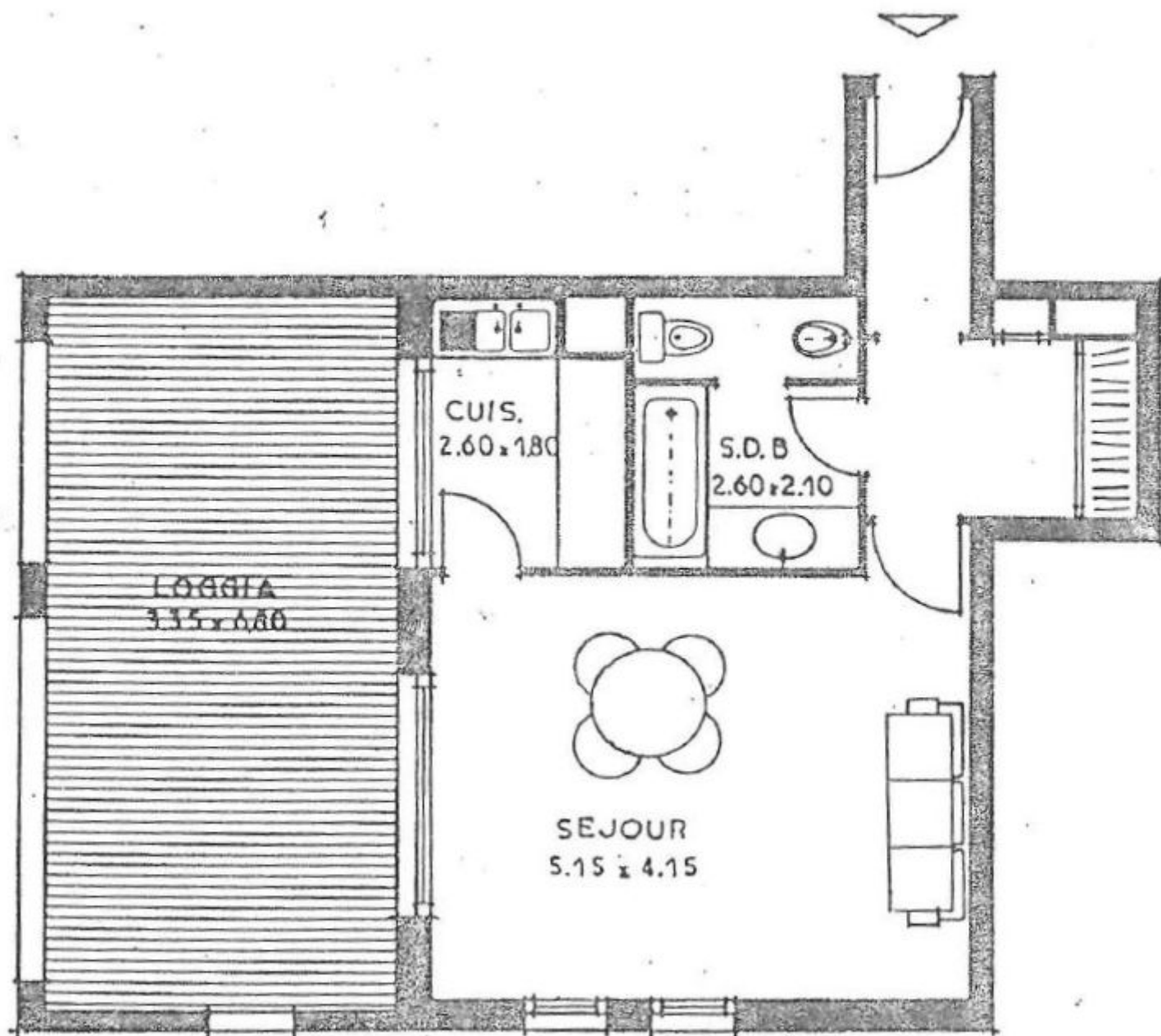
SPACIOUS STUDIO FACING THE PORT OF FONTVIEILLE



This document does not form part of any offer or contract. All measurements, areas and distances are approximate. The information and plans contained herein are believed to be correct, however, their accuracy is not guaranteed. The photographs show only certain parts of the property at the time they were taken. This offer is subject to change of price or other conditions, without prior notice.



SPACIOUS STUDIO FACING THE PORT OF FONTVIEILLE



This document does not form part of any offer or contract. All measurements, areas and distances are approximate. The information and plans contained herein are believed to be correct, however, their accuracy is not guaranteed. The photographs show only certain parts of the property at the time they were taken. This offer is subject to change of price or other conditions, without prior notice.