



SPACIOUS 2-ROOM APARTMENT NEAR THE CASINO

16.000 €/month



DESCRIPTIVE :

Beautiful 2 ROOM apartment in a prestigious, luxury building on the edge of the Casino gardens and the Principality's most prestigious hotels, with 24-hour caretaker, a beautiful heated indoor swimming pool that operates all year round, a sauna and a gym.

With a total surface area of 109 M2, it comprises: entrance hall, large living room opening onto terrace, bedroom with dressing room and full bathroom, fitted kitchen opening onto balcony with service entrance and pantry, guest toilet.

It has a pleasant terrace with a total surface area of 16 M2 overlooking the Casino gardens.

Rented with a cellar and parking space.

REF: LM2109

DETAILS



*109 m²



16 m²



Good condition



1



Facing south east



Casino view

CHARGES

530 €/mois

*marketable surface area

This document does not form part of any offer or contract. All measurements, areas and distances are approximate. The information and plans contained herein are believed to be correct, however, their accuracy is not guaranteed. The photographs show only certain parts of the property at the time they were taken. This offer is subject to change of price or other conditions, without prior notice.



SPACIOUS 2-ROOM APARTMENT NEAR THE CASINO



This document does not form part of any offer or contract. All measurements, areas and distances are approximate. The information and plans contained herein are believed to be correct, however, their accuracy is not guaranteed. The photographs show only certain parts of the property at the time they were taken. This offer is subject to change of price or other conditions, without prior notice.



SPACIOUS 2-ROOM APARTMENT NEAR THE CASINO



This document does not form part of any offer or contract. All measurements, areas and distances are approximate. The information and plans contained herein are believed to be correct, however, their accuracy is not guaranteed. The photographs show only certain parts of the property at the time they were taken. This offer is subject to change of price or other conditions, without prior notice.



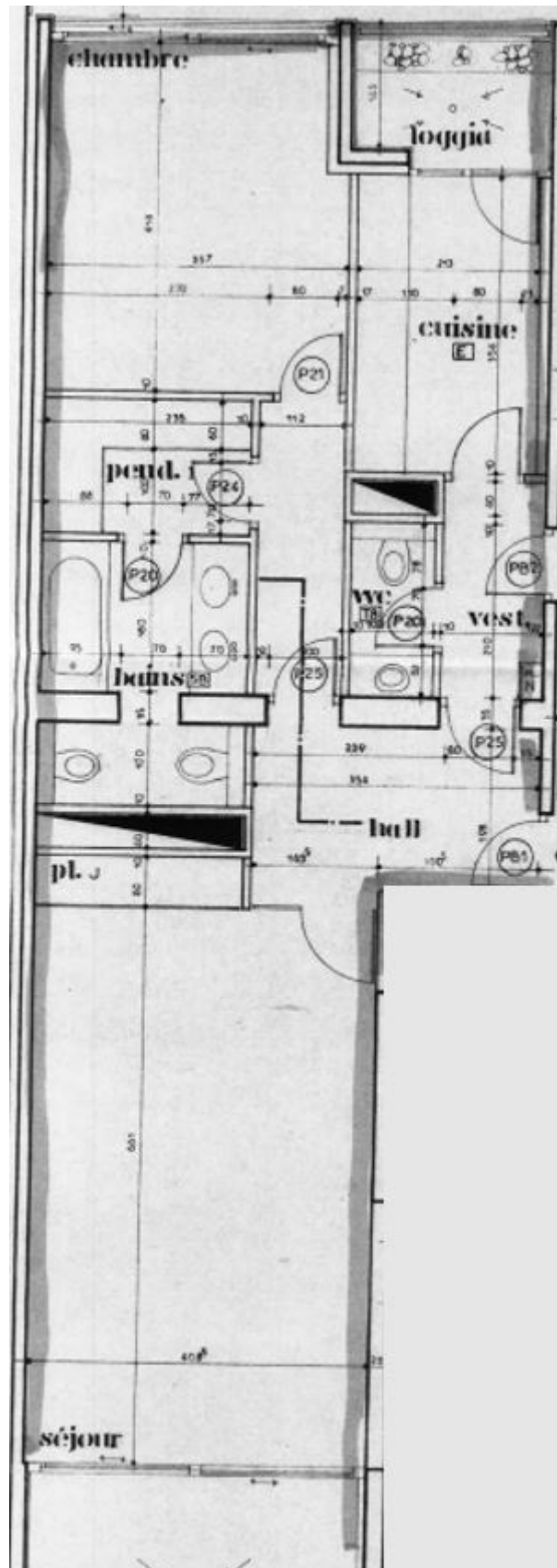
SPACIOUS 2-ROOM APARTMENT NEAR THE CASINO



This document does not form part of any offer or contract. All measurements, areas and distances are approximate. The information and plans contained herein are believed to be correct, however, their accuracy is not guaranteed. The photographs show only certain parts of the property at the time they were taken. This offer is subject to change of price or other conditions, without prior notice.



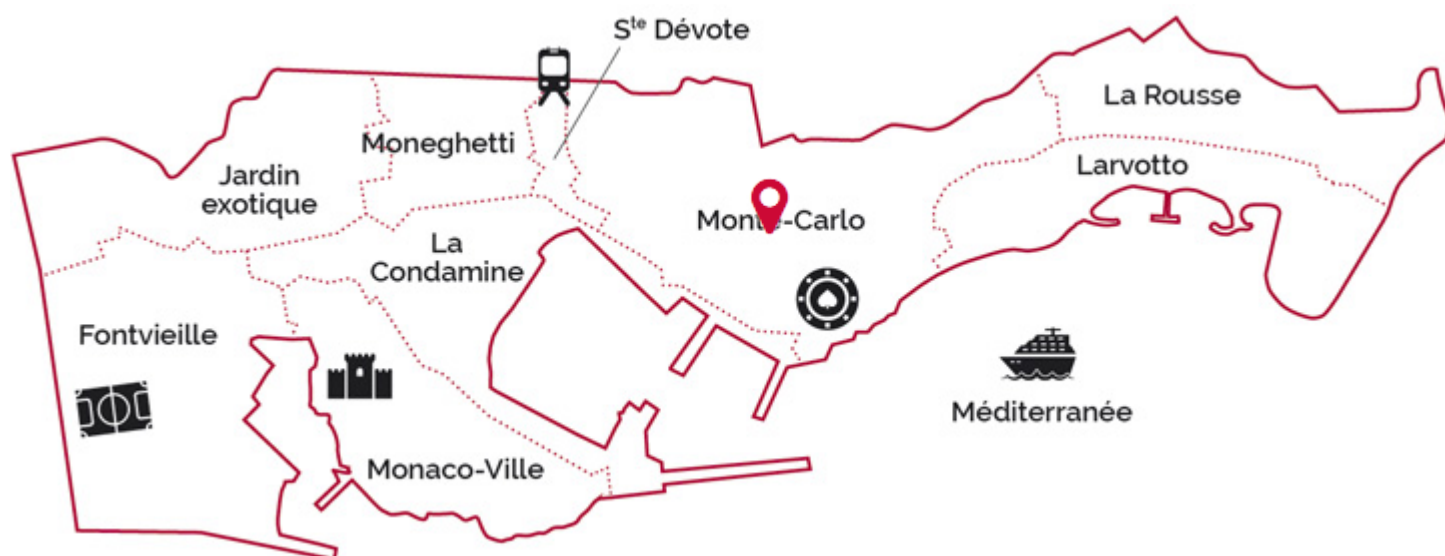
SPACIOUS 2-ROOM APARTMENT NEAR THE CASINO



This document does not form part of any offer or contract. All measurements, areas and distances are approximate. The information and plans contained herein are believed to be correct, however, their accuracy is not guaranteed. The photographs show only certain parts of the property at the time they were taken. This offer is subject to change of price or other conditions, without prior notice.



SPACIOUS 2-ROOM APARTMENT NEAR THE CASINO



This document does not form part of any offer or contract. All measurements, areas and distances are approximate. The information and plans contained herein are believed to be correct, however, their accuracy is not guaranteed. The photographs show only certain parts of the property at the time they were taken. This offer is subject to change of price or other conditions, without prior notice.