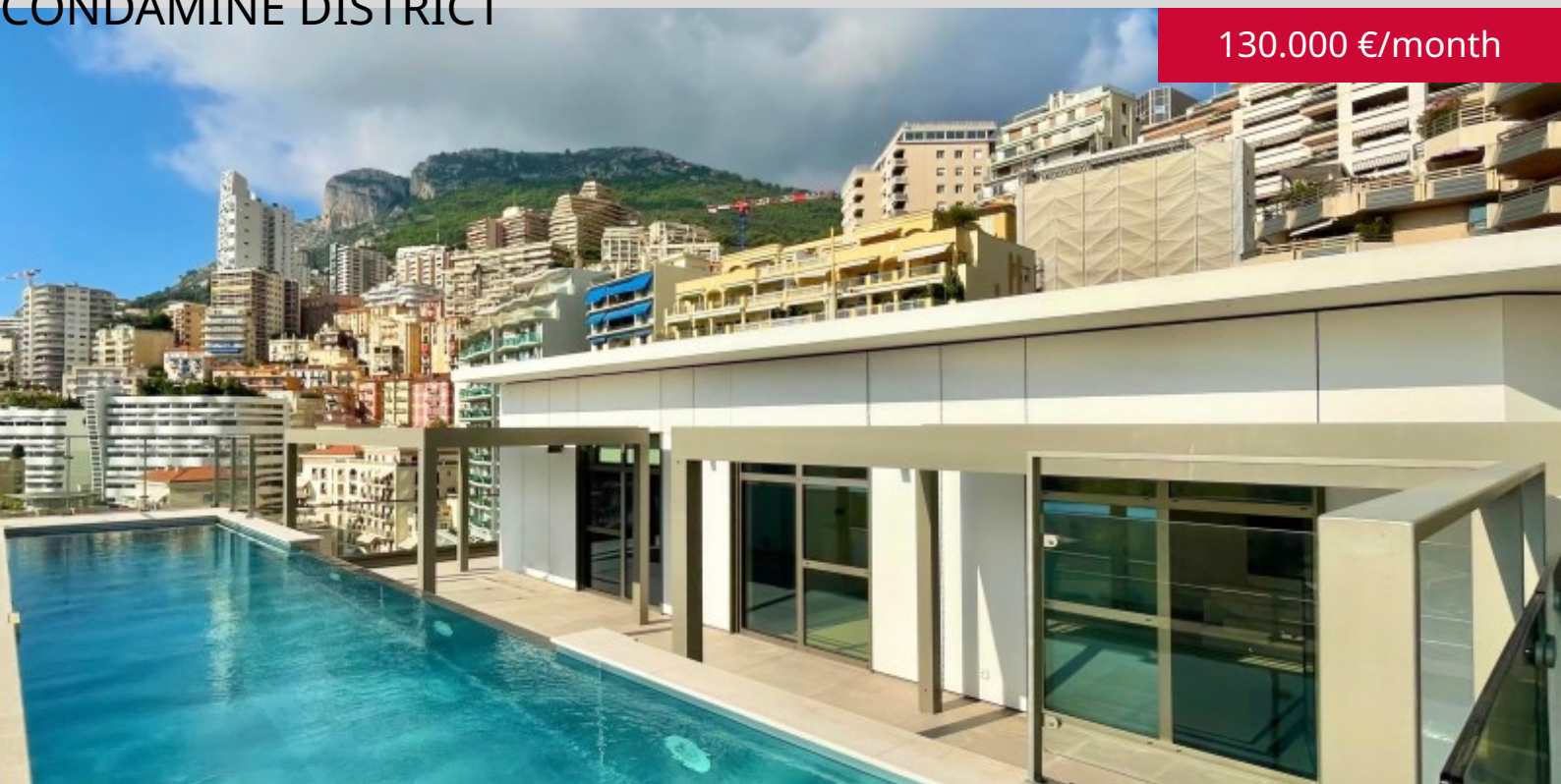




PENTHOUSE WITH SWIMMING POOL IN THE HEART OF THE CONDAMINE DISTRICT

130.000 €/month



DESCRIPTIVE :

RARE : PENTHOUSE in duplex located in a new building. A luxury residence with luxurious features in the heart of the Condamine district, very close to Port Hercule and the shops.

- 14th floor: entrance hall, double living room, dining room, kitchen with adjoining pantry, master bedroom with en suite bathroom and shower, three bedrooms with adjoining shower rooms and guest toilet.

- 15th floor: living room, kitchen, fitness area, bedroom with en suite shower room and dressing room, office, toilet, terrace with sitting area, dining area and private swimming pool.

It enjoys panoramic views over the Port and the Rocher.

Two cellars and five parking spaces complete this property.

REF: LM2405

DETAILS



*1078 m²



462 m²



Excellent condition



5



Panoramic, Port, Rock view

CHARGES

8 000 €/mois

*marketable surface area

This document does not form part of any offer or contract. All measurements, areas and distances are approximate. The information and plans contained herein are believed to be correct, however, their accuracy is not guaranteed. The photographs show only certain parts of the property at the time they were taken. This offer is subject to change of price or other conditions, without prior notice.



PENTHOUSE WITH SWIMMING POOL IN THE HEART OF THE CONDAMINE DISTRICT



This document does not form part of any offer or contract. All measurements, areas and distances are approximate. The information and plans contained herein are believed to be correct, however, their accuracy is not guaranteed. The photographs show only certain parts of the property at the time they were taken. This offer is subject to change of price or other conditions, without prior notice.



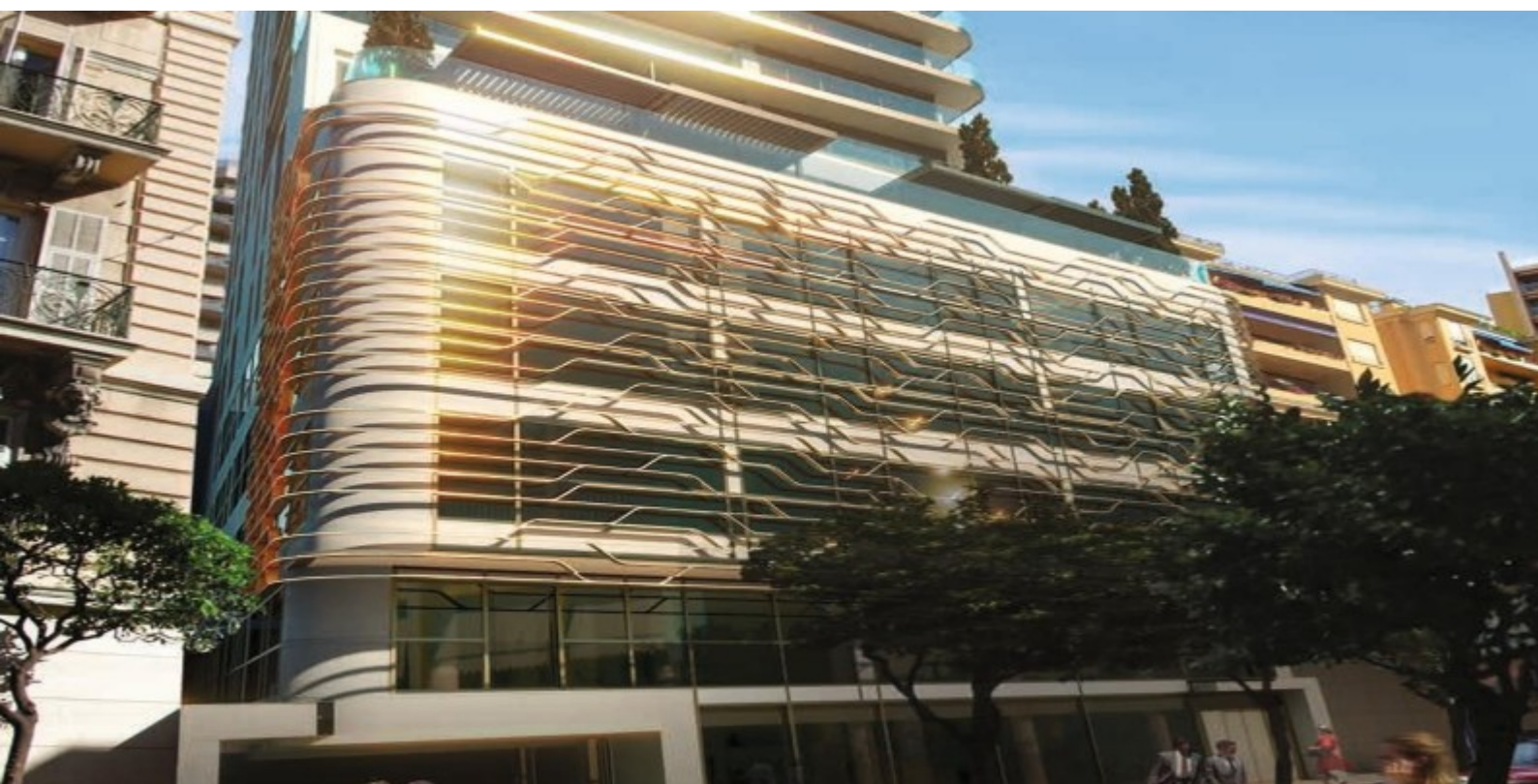
PENTHOUSE WITH SWIMMING POOL IN THE HEART OF THE CONDAMINE DISTRICT



This document does not form part of any offer or contract. All measurements, areas and distances are approximate. The information and plans contained herein are believed to be correct, however, their accuracy is not guaranteed. The photographs show only certain parts of the property at the time they were taken. This offer is subject to change of price or other conditions, without prior notice.



PENTHOUSE WITH SWIMMING POOL IN THE HEART OF THE CONDAMINE DISTRICT

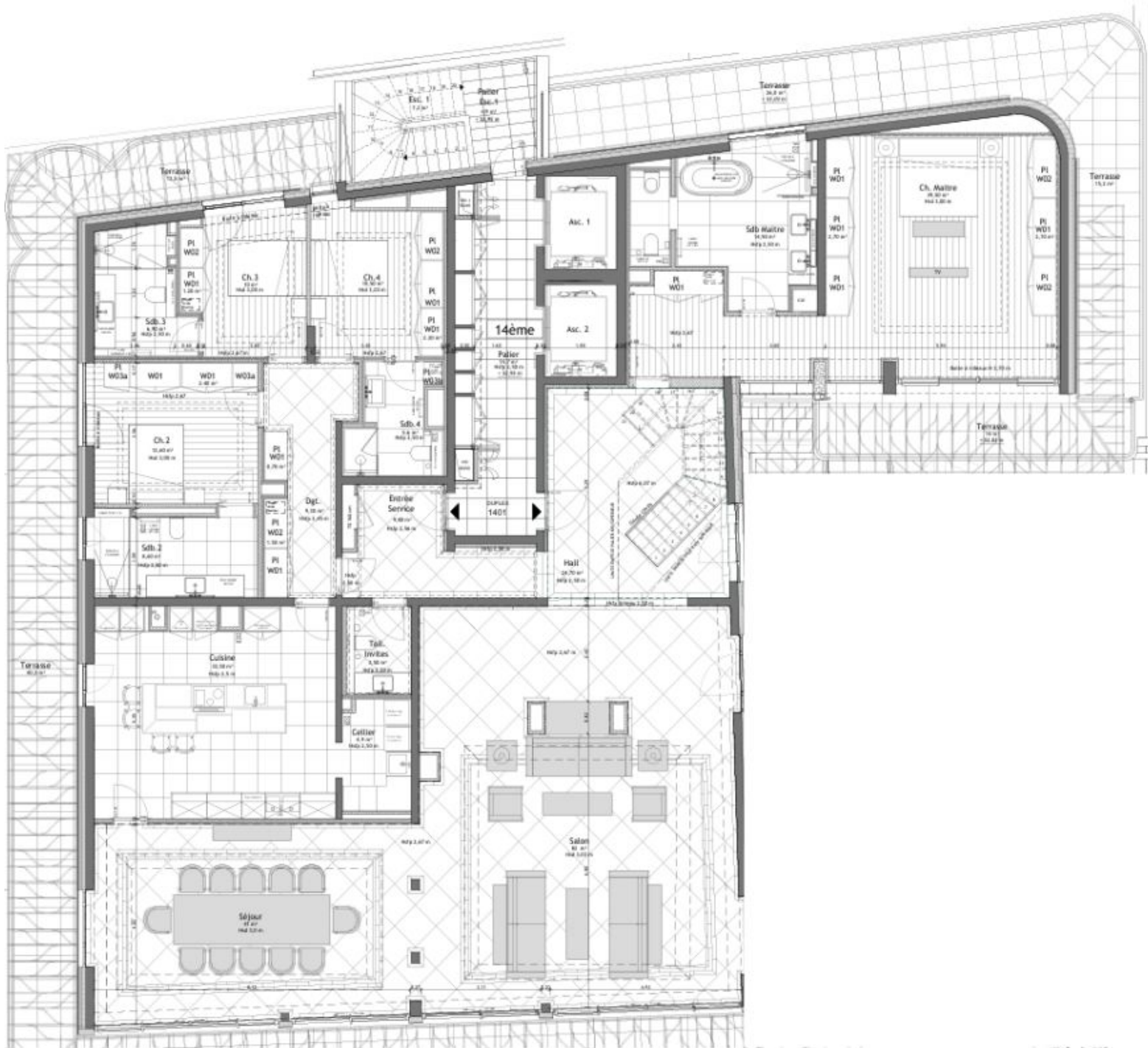


This document does not form part of any offer or contract. All measurements, areas and distances are approximate. The information and plans contained herein are believed to be correct, however, their accuracy is not guaranteed. The photographs show only certain parts of the property at the time they were taken. This offer is subject to change of price or other conditions, without prior notice.



PENTHOUSE WITH SWIMMING POOL IN THE HEART OF THE CONDAMINE DISTRICT

14th Floor

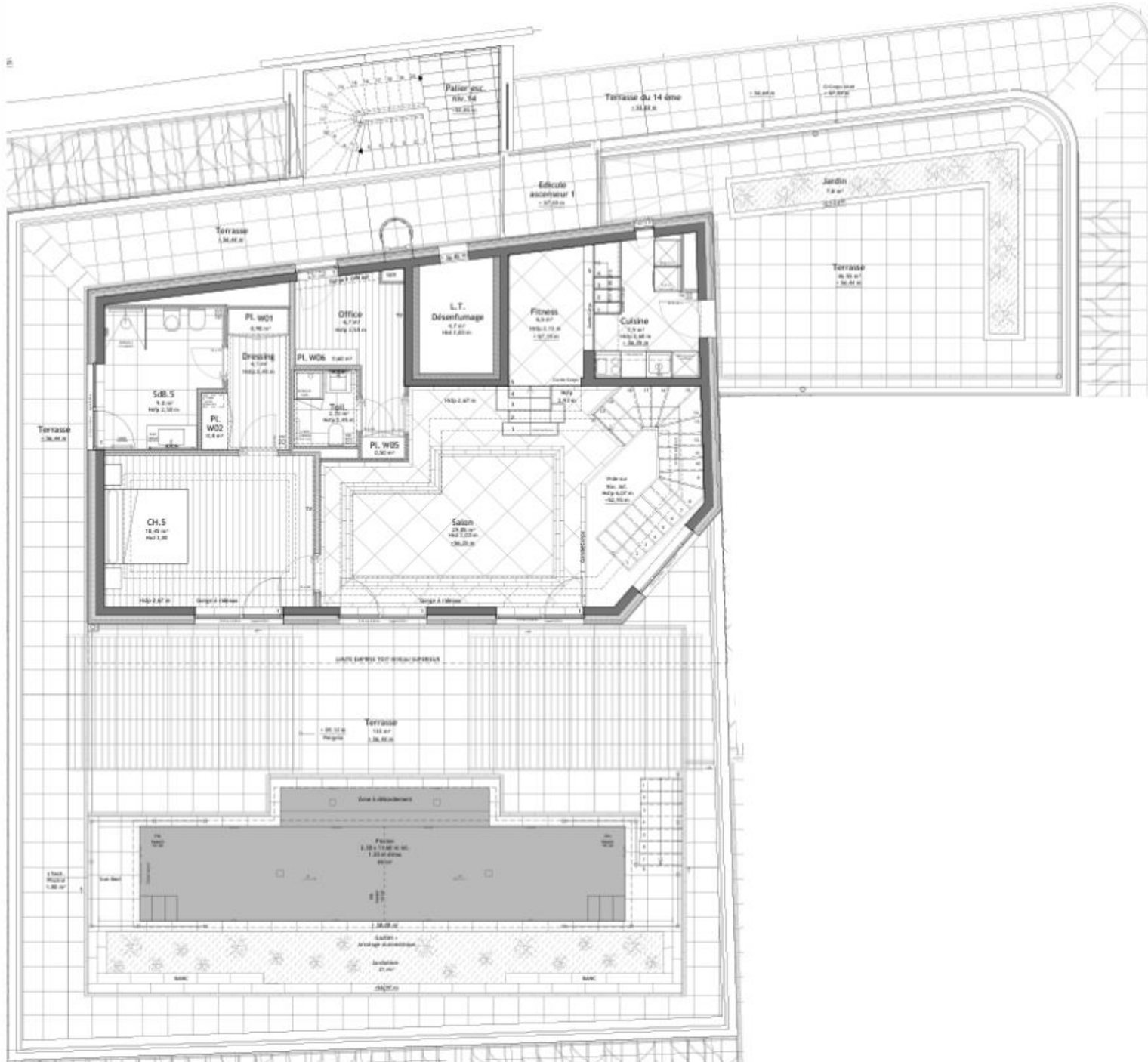


This document does not form part of any offer or contract. All measurements, areas and distances are approximate. The information and plans contained herein are believed to be correct, however, their accuracy is not guaranteed. The photographs show only certain parts of the property at the time they were taken. This offer is subject to change of price or other conditions, without prior notice.



PENTHOUSE WITH SWIMMING POOL IN THE HEART OF THE CONDAMINE DISTRICT

15th Floor



This document does not form part of any offer or contract. All measurements, areas and distances are approximate. The information and plans contained herein are believed to be correct, however, their accuracy is not guaranteed. The photographs show only certain parts of the property at the time they were taken. This offer is subject to change of price or other conditions, without prior notice.



PENTHOUSE WITH SWIMMING POOL IN THE HEART OF THE CONDAMINE DISTRICT



This document does not form part of any offer or contract. All measurements, areas and distances are approximate. The information and plans contained herein are believed to be correct, however, their accuracy is not guaranteed. The photographs show only certain parts of the property at the time they were taken. This offer is subject to change of price or other conditions, without prior notice.