



FAMILY FLAT CLOSE TO THE LARVOTTO BEACHES

4 500 000 €



DESCRIPTIVE :

Pleasant 4 ROOM apartment with excellent potential in a luxury building on the seafront, overlooking the Larvotto beaches. Close to all amenities. With a total surface area of 121 M2, it comprises: entrance hall, living room with balcony, dining area, two bedrooms with balcony, full bathroom, shower room with wc, kitchen area, utility room. Quiet and sunny. It has 2 balconies totalling 15 M2 with sea views. Sold with parking space.

REF: VM1464

DETAILS

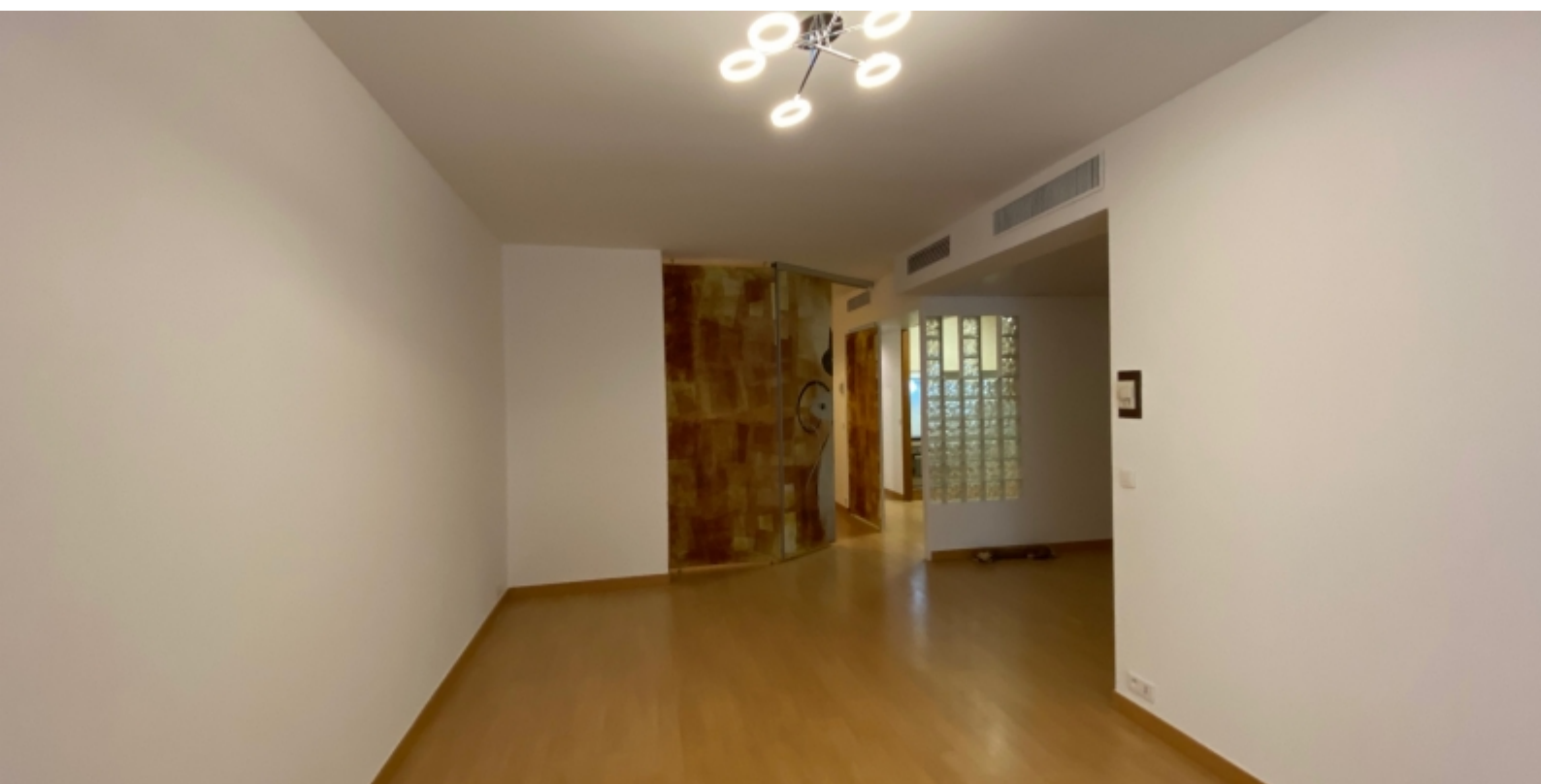
	*121 m²
	15 m²
	To be refreshed
	2
	Facing south east
	Partial View Sea view

*marketable surface area

This document does not form part of any offer or contract. All measurements, areas and distances are approximate. The information and plans contained herein are believed to be correct, however, their accuracy is not guaranteed. The photographs show only certain parts of the property at the time they were taken. This offer is subject to change of price or other conditions, without prior notice.



FAMILY FLAT CLOSE TO THE LARVOTTO BEACHES



This document does not form part of any offer or contract. All measurements, areas and distances are approximate. The information and plans contained herein are believed to be correct, however, their accuracy is not guaranteed. The photographs show only certain parts of the property at the time they were taken. This offer is subject to change of price or other conditions, without prior notice.



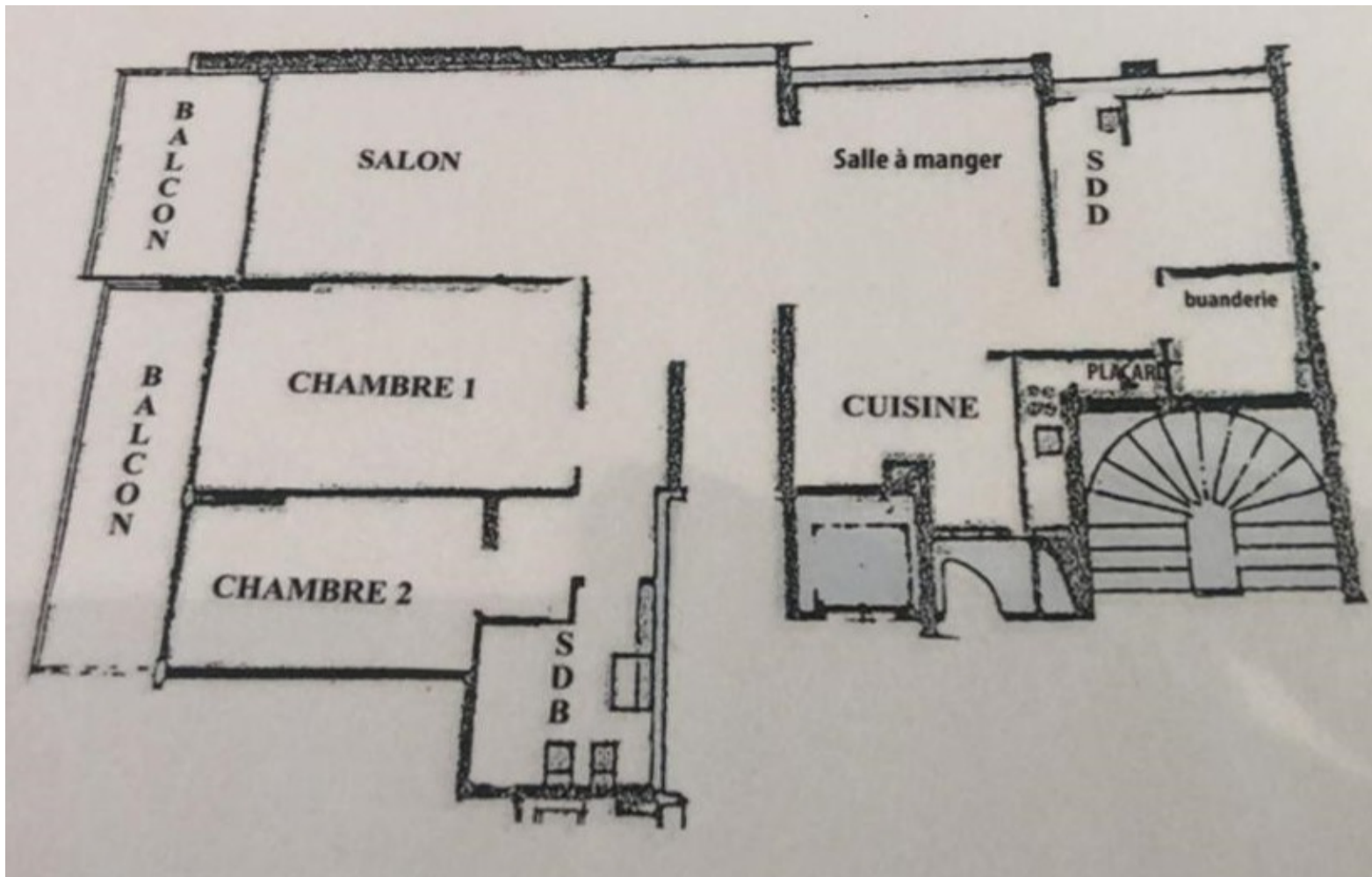
FAMILY FLAT CLOSE TO THE LARVOTTO BEACHES



This document does not form part of any offer or contract. All measurements, areas and distances are approximate. The information and plans contained herein are believed to be correct, however, their accuracy is not guaranteed. The photographs show only certain parts of the property at the time they were taken. This offer is subject to change of price or other conditions, without prior notice.



FAMILY FLAT CLOSE TO THE LARVOTTO BEACHES



This document does not form part of any offer or contract. All measurements, areas and distances are approximate. The information and plans contained herein are believed to be correct, however, their accuracy is not guaranteed. The photographs show only certain parts of the property at the time they were taken. This offer is subject to change of price or other conditions, without prior notice.