



## OFFICES IN THE HEART OF THE CARRE' D'OR

6 300 000 €



### DESCRIPTIVE :

Spacious OFFICES, entirely renovated, located in a modern building of high standing with concierge, in the center of the Principality, near the beaches and the Casino.

With a total surface of 104 M2, they are composed of: entrance hall, three offices each open on a terrace, a kitchen, two toilets (men and women). Possibility of acquiring in addition cellars and/or parking spaces.

REF: VM1823

### DETAILS



\*104 m<sup>2</sup>



29 m<sup>2</sup>



New



Facing south east



Clear , City view

\*marketable surface area

This document does not form part of any offer or contract. All measurements, areas and distances are approximate. The information and plans contained herein are believed to be correct, however, their accuracy is not guaranteed. The photographs show only certain parts of the property at the time they were taken. This offer is subject to change of price or other conditions, without prior notice.



## OFFICES IN THE HEART OF THE CARRE' D'OR



This document does not form part of any offer or contract. All measurements, areas and distances are approximate. The information and plans contained herein are believed to be correct, however, their accuracy is not guaranteed. The photographs show only certain parts of the property at the time they were taken. This offer is subject to change of price or other conditions, without prior notice.





## OFFICES IN THE HEART OF THE CARRE' D'OR



This document does not form part of any offer or contract. All measurements, areas and distances are approximate. The information and plans contained herein are believed to be correct, however, their accuracy is not guaranteed. The photographs show only certain parts of the property at the time they were taken. This offer is subject to change of price or other conditions, without prior notice.





## OFFICES IN THE HEART OF THE CARRE' D'OR

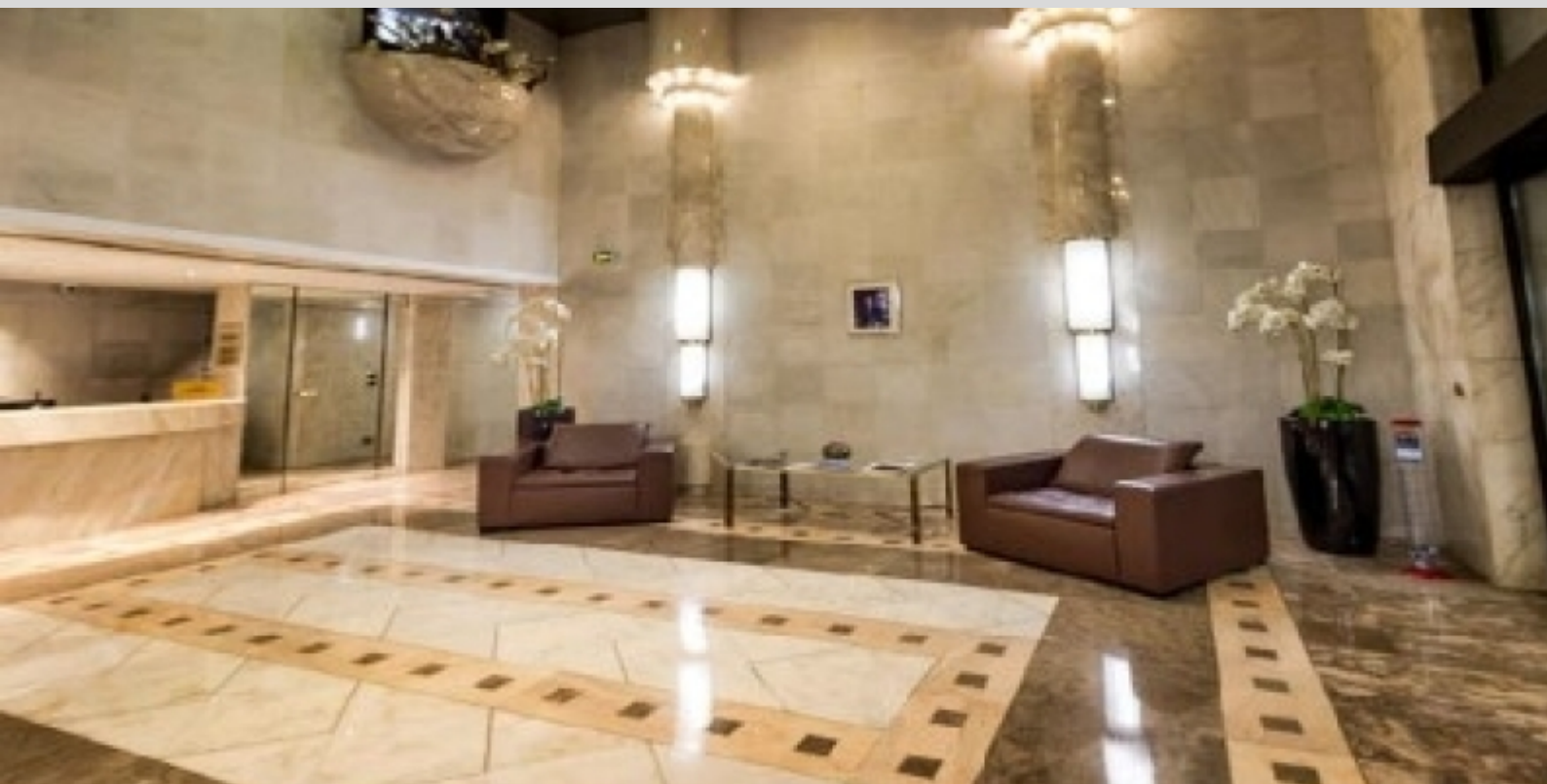


This document does not form part of any offer or contract. All measurements, areas and distances are approximate. The information and plans contained herein are believed to be correct, however, their accuracy is not guaranteed. The photographs show only certain parts of the property at the time they were taken. This offer is subject to change of price or other conditions, without prior notice.





## OFFICES IN THE HEART OF THE CARRE' D'OR



This document does not form part of any offer or contract. All measurements, areas and distances are approximate. The information and plans contained herein are believed to be correct, however, their accuracy is not guaranteed. The photographs show only certain parts of the property at the time they were taken. This offer is subject to change of price or other conditions, without prior notice.





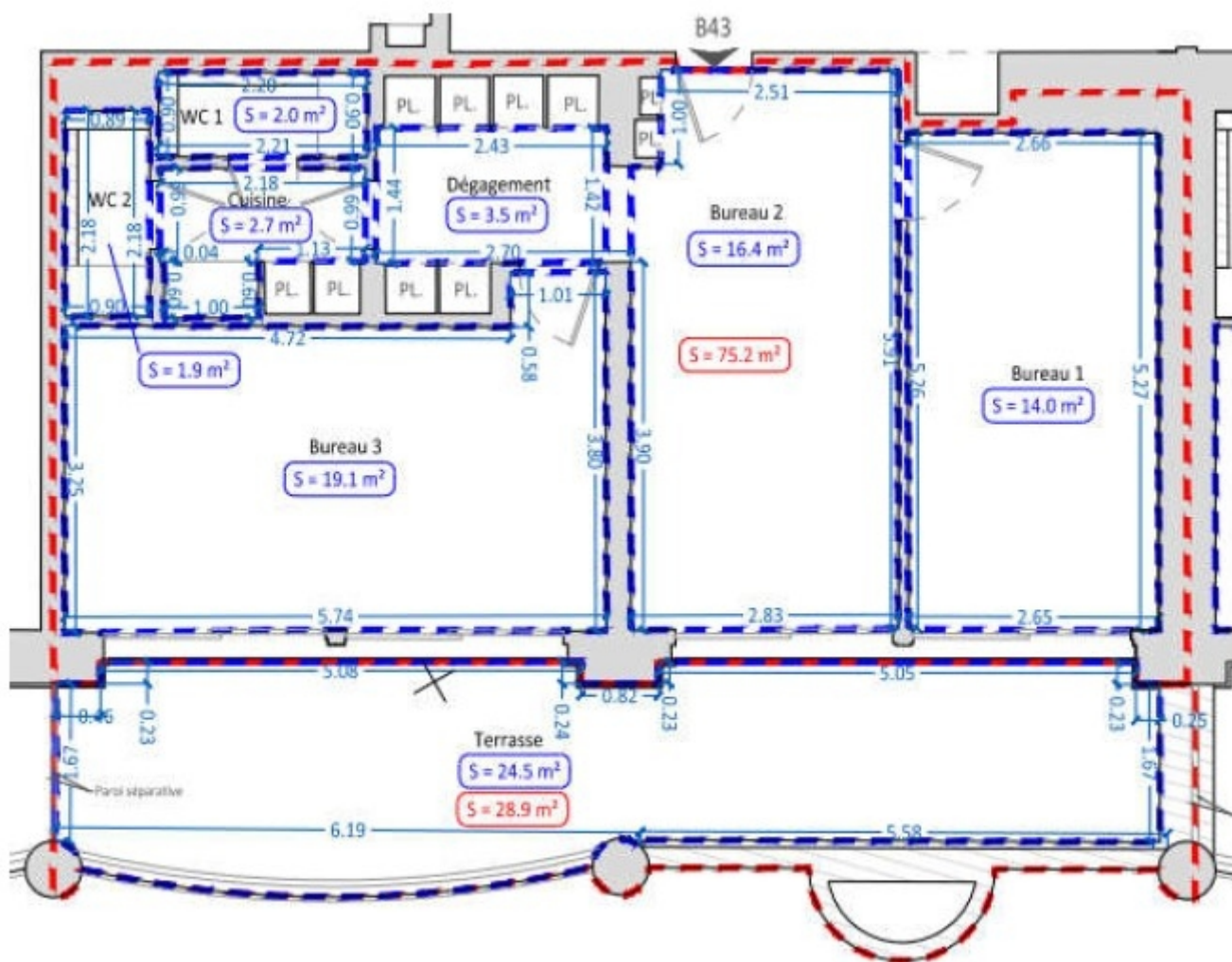
## OFFICES IN THE HEART OF THE CARRE' D'OR



This document does not form part of any offer or contract. All measurements, areas and distances are approximate. The information and plans contained herein are believed to be correct, however, their accuracy is not guaranteed. The photographs show only certain parts of the property at the time they were taken. This offer is subject to change of price or other conditions, without prior notice.



## OFFICES IN THE HEART OF THE CARRE' D'OR



This document does not form part of any offer or contract. All measurements, areas and distances are approximate. The information and plans contained herein are believed to be correct, however, their accuracy is not guaranteed. The photographs show only certain parts of the property at the time they were taken. This offer is subject to change of price or other conditions, without prior notice.