



BEAUTIFUL APARTMENT OVERLOOKING PORT HERCULE

Price on request



DESCRIPTIVE :

Delightful mixed-use 2/3 ROOM apartment with breathtaking views of Port Hercule and GRIMALDI Rock, located in a beautiful bourgeois building near the Carré d'Or.

With a total surface area of 99 M2, it comprises: entrance hall with large cupboard, double living room opening onto a beautiful panoramic terrace, large bedroom opening onto terrace, light-filled shower room, attractive light-filled kitchen.

It benefits from a terrace of approx. 18 M2.

REF: VM2264

DETAILS



*99 m²



18 m²



Excellent condition



1



Facing south



Panoramic, Port, Rock view

*marketable surface area

This document does not form part of any offer or contract. All measurements, areas and distances are approximate. The information and plans contained herein are believed to be correct, however, their accuracy is not guaranteed. The photographs show only certain parts of the property at the time they were taken. This offer is subject to change of price or other conditions, without prior notice.



BEAUTIFUL APARTMENT OVERLOOKING PORT HERCULE



This document does not form part of any offer or contract. All measurements, areas and distances are approximate. The information and plans contained herein are believed to be correct, however, their accuracy is not guaranteed. The photographs show only certain parts of the property at the time they were taken. This offer is subject to change of price or other conditions, without prior notice.



BEAUTIFUL APARTMENT OVERLOOKING PORT HERCULE



This document does not form part of any offer or contract. All measurements, areas and distances are approximate. The information and plans contained herein are believed to be correct, however, their accuracy is not guaranteed. The photographs show only certain parts of the property at the time they were taken. This offer is subject to change of price or other conditions, without prior notice.



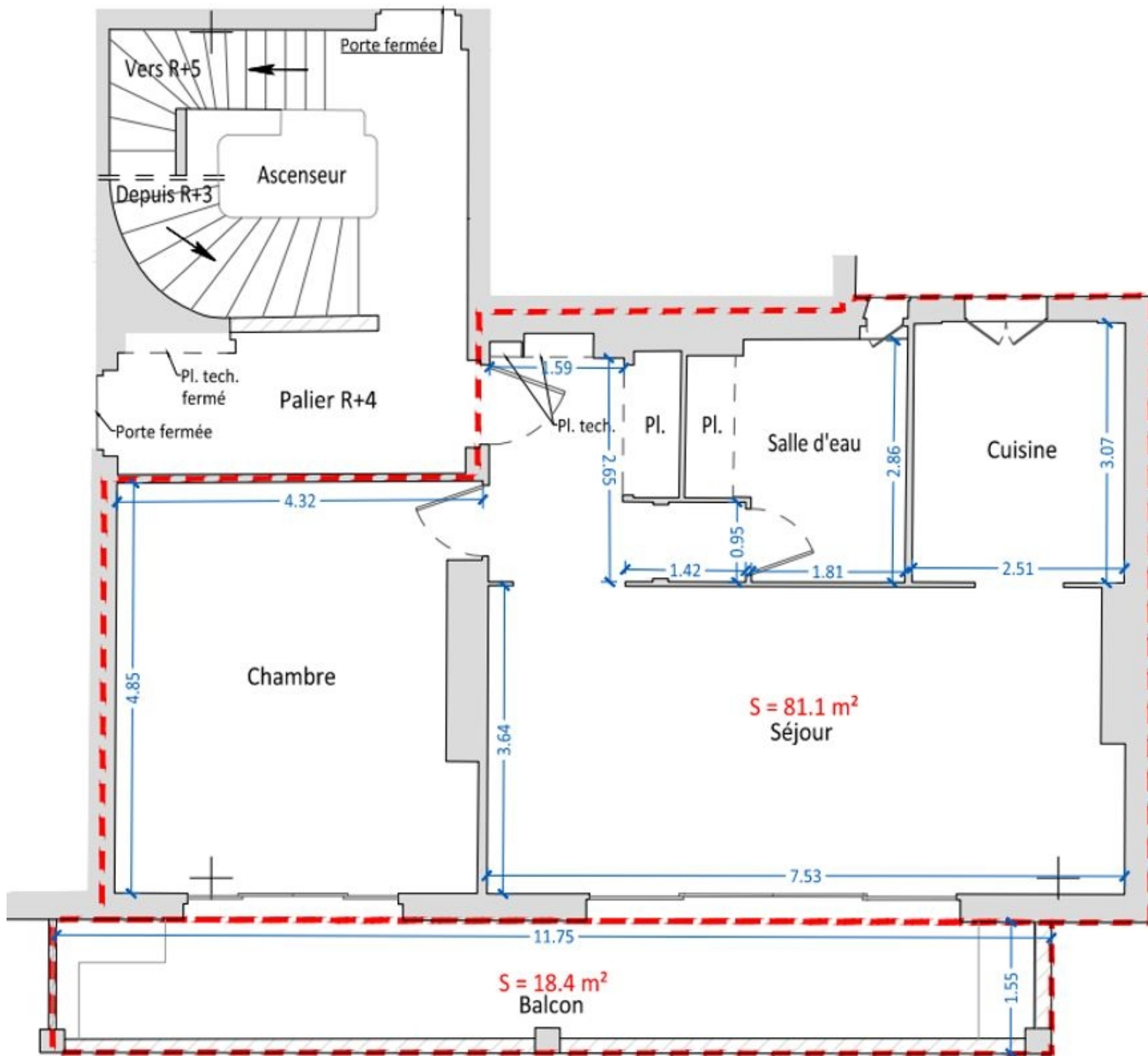
BEAUTIFUL APARTMENT OVERLOOKING PORT HERCULE



This document does not form part of any offer or contract. All measurements, areas and distances are approximate. The information and plans contained herein are believed to be correct, however, their accuracy is not guaranteed. The photographs show only certain parts of the property at the time they were taken. This offer is subject to change of price or other conditions, without prior notice.



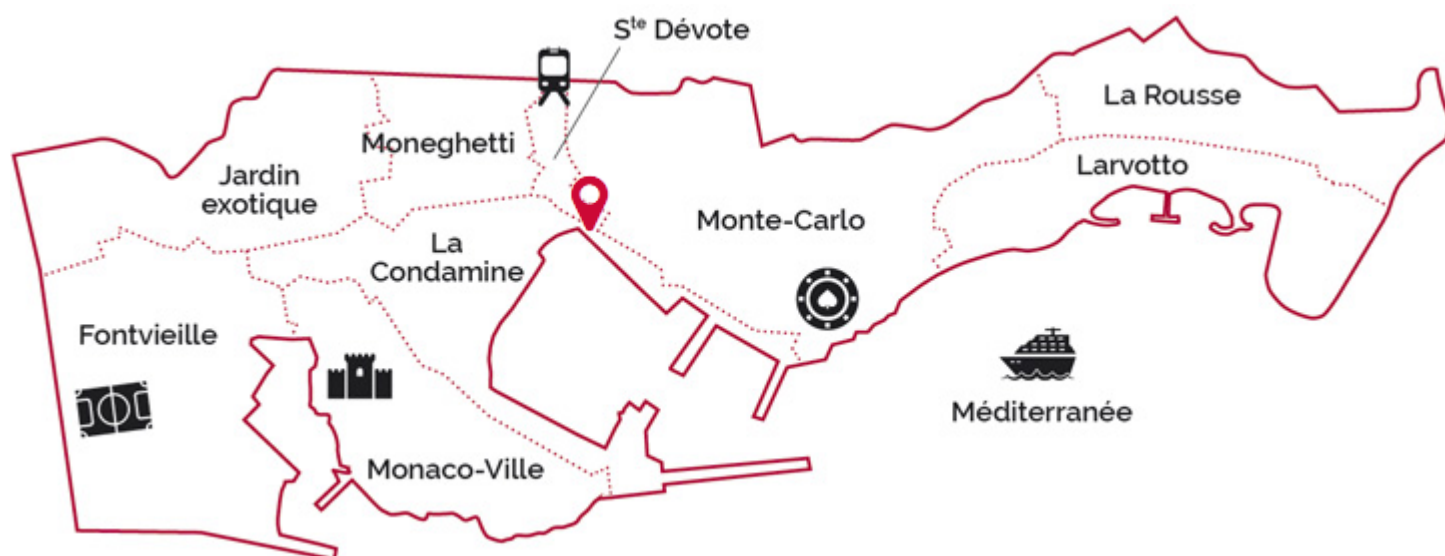
BEAUTIFUL APARTMENT OVERLOOKING PORT HERCULE



This document does not form part of any offer or contract. All measurements, areas and distances are approximate. The information and plans contained herein are believed to be correct, however, their accuracy is not guaranteed. The photographs show only certain parts of the property at the time they were taken. This offer is subject to change of price or other conditions, without prior notice.



BEAUTIFUL APARTMENT OVERLOOKING PORT HERCULE



This document does not form part of any offer or contract. All measurements, areas and distances are approximate. The information and plans contained herein are believed to be correct, however, their accuracy is not guaranteed. The photographs show only certain parts of the property at the time they were taken. This offer is subject to change of price or other conditions, without prior notice.