



## COMMERCIAL PREMISES FONTVIEILLE

2 015 000 €



### DESCRIPTIVE :

ADMINISTRATIVE OFFICES with high ceilings located in a small residence in Fontvieille Village, overlooking the square. Close to restaurants and all amenities.

With a total surface area of 47 m<sup>2</sup>, they consist of: direct access through a beautiful window, a main room, a meeting room, a bathroom and two toilets.

Use: commercial premises/administrative office.

**REF: VM2287**

### DETAILS



\*47 m<sup>2</sup>



Excellent condition

\*marketable surface area

This document does not form part of any offer or contract. All measurements, areas and distances are approximate. The information and plans contained herein are believed to be correct, however, their accuracy is not guaranteed. The photographs show only certain parts of the property at the time they were taken. This offer is subject to change of price or other conditions, without prior notice.



## COMMERCIAL PREMISES FONTVIEILLE



This document does not form part of any offer or contract. All measurements, areas and distances are approximate. The information and plans contained herein are believed to be correct, however, their accuracy is not guaranteed. The photographs show only certain parts of the property at the time they were taken. This offer is subject to change of price or other conditions, without prior notice.



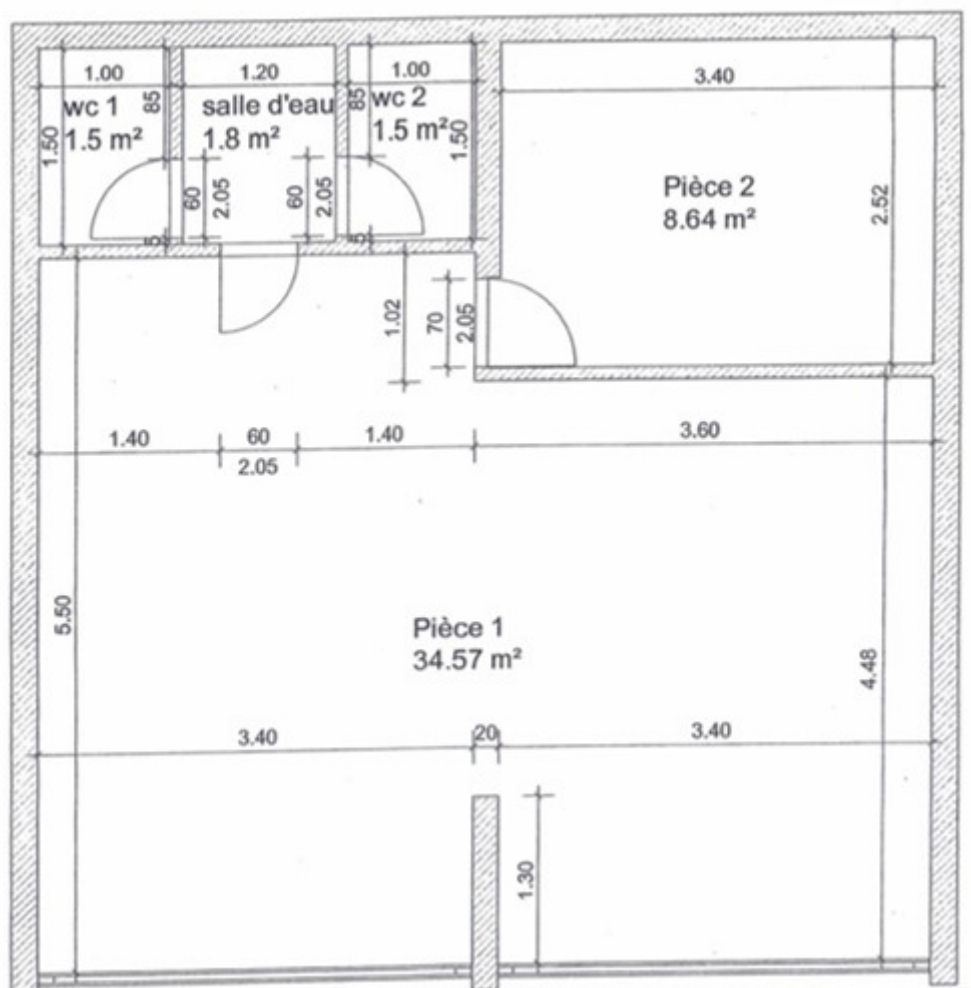
## COMMERCIAL PREMISES FONTVIEILLE



This document does not form part of any offer or contract. All measurements, areas and distances are approximate. The information and plans contained herein are believed to be correct, however, their accuracy is not guaranteed. The photographs show only certain parts of the property at the time they were taken. This offer is subject to change of price or other conditions, without prior notice.



## COMMERCIAL PREMISES FONTVIEILLE

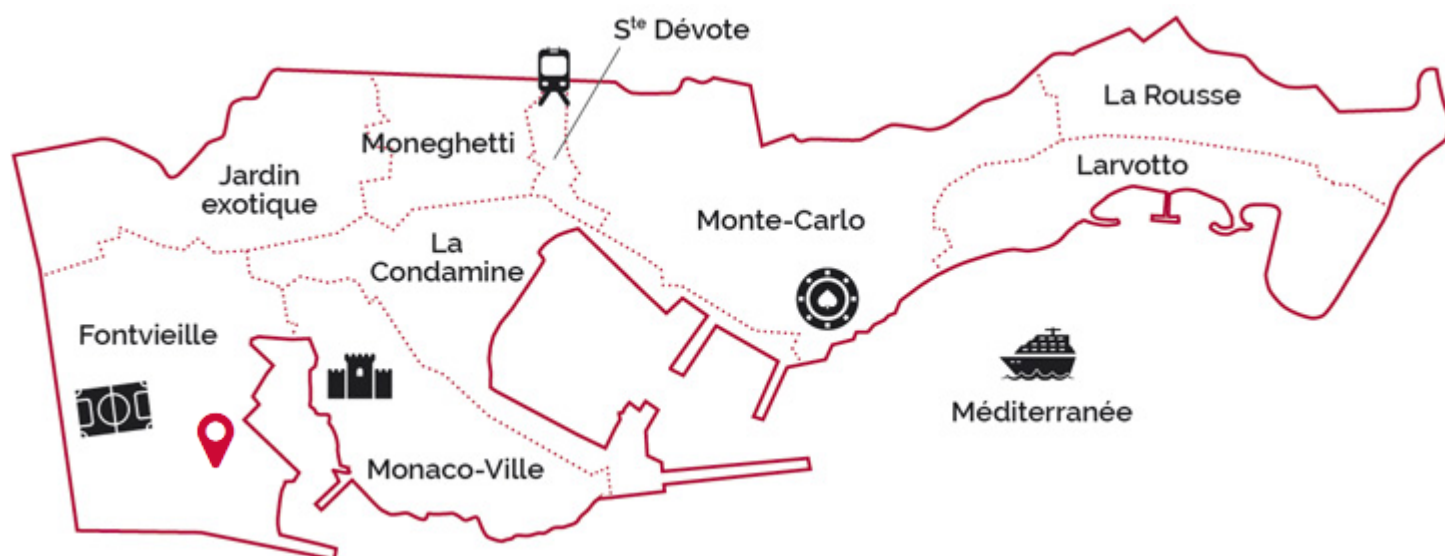


**Dotta.**  
MONACO PRIVATE REAL ESTATE

**www.dotta.mc**  
+377 97 98 20 00 - info@dotta.mc  
5 bis avenue Princesse Alice - BP 98005 - Monaco Cedex



## COMMERCIAL PREMISES FONTVIEILLE



This document does not form part of any offer or contract. All measurements, areas and distances are approximate. The information and plans contained herein are believed to be correct, however, their accuracy is not guaranteed. The photographs show only certain parts of the property at the time they were taken. This offer is subject to change of price or other conditions, without prior notice.