



STUDIO IN THE HEART OF FONTVIEILLE

2 250 000 €



DESCRIPTIVE :

This studio is located in a charming Provençal-style building, in the center of the Fontvieille marina, just a few steps from the Port de Plaisance. Surrounded by lush gardens, it offers an ideal location.

With a total area of 43sqm, it comprises an entrance hall with a closet, a bathroom with a WC, a living room, and a kitchen.

The studio also features a closed loggia of approximately 10sqm with a clear view of the Fontvieille harbor.

Sold with a cellar.

Possibility of purchasing a parking space for an additional €350,000.

REF: VM2318

DETAILS



*43 m²



11 m²



Good condition



Facing south



Clear , Port view

*marketable surface area

This document does not form part of any offer or contract. All measurements, areas and distances are approximate. The information and plans contained herein are believed to be correct, however, their accuracy is not guaranteed. The photographs show only certain parts of the property at the time they were taken. This offer is subject to change of price or other conditions, without prior notice.



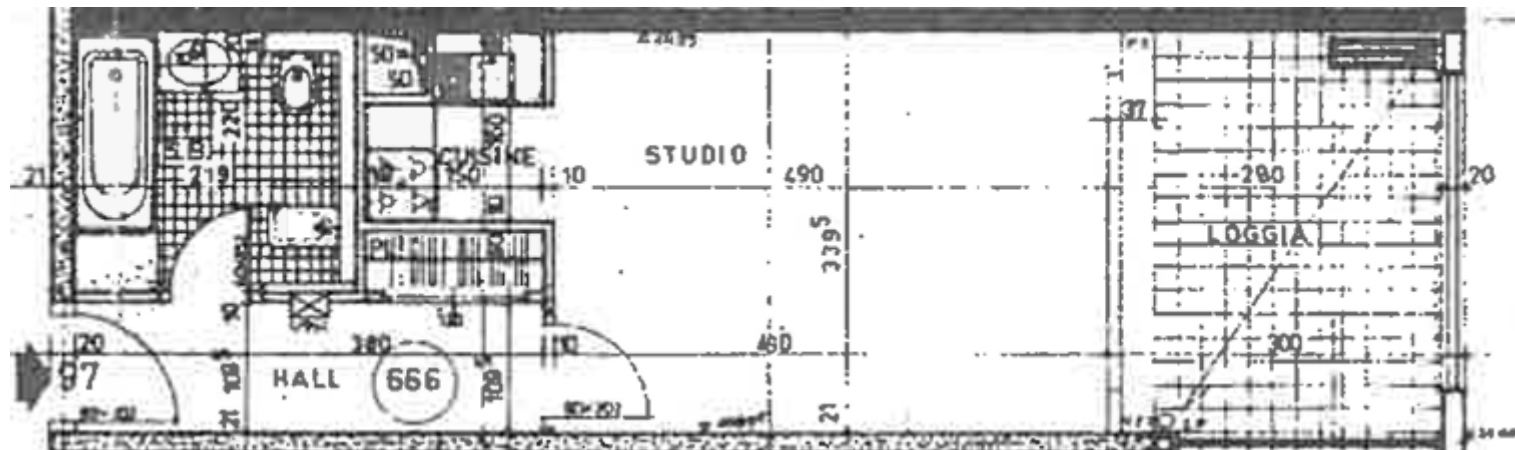
STUDIO IN THE HEART OF FONTVIEILLE



This document does not form part of any offer or contract. All measurements, areas and distances are approximate. The information and plans contained herein are believed to be correct, however, their accuracy is not guaranteed. The photographs show only certain parts of the property at the time they were taken. This offer is subject to change of price or other conditions, without prior notice.



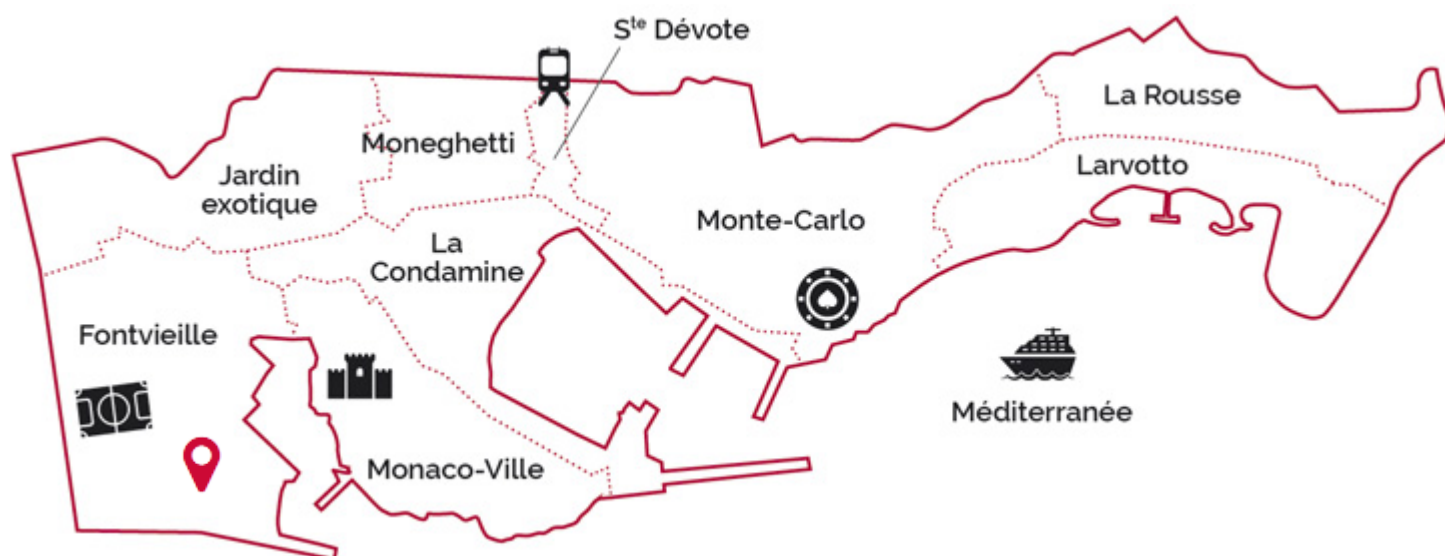
STUDIO IN THE HEART OF FONTVIEILLE



This document does not form part of any offer or contract. All measurements, areas and distances are approximate. The information and plans contained herein are believed to be correct, however, their accuracy is not guaranteed. The photographs show only certain parts of the property at the time they were taken. This offer is subject to change of price or other conditions, without prior notice.



STUDIO IN THE HEART OF FONTVIEILLE



This document does not form part of any offer or contract. All measurements, areas and distances are approximate. The information and plans contained herein are believed to be correct, however, their accuracy is not guaranteed. The photographs show only certain parts of the property at the time they were taken. This offer is subject to change of price or other conditions, without prior notice.