



## OFFICE - TITEN - FONTVIEILLE

2 332 000 €



### DESCRIPTIVE :

Office with windowshops located on the groundfloor of the "TITIEN" building, in the Fontvieille's marina.

**REF: VM358**

### DETAILS



\*63 m<sup>2</sup>



Good condition



Facing east



Gardens view

\*marketable surface area

This document does not form part of any offer or contract. All measurements, areas and distances are approximate. The information and plans contained herein are believed to be correct, however, their accuracy is not guaranteed. The photographs show only certain parts of the property at the time they were taken. This offer is subject to change of price or other conditions, without prior notice.



## OFFICE - TITEN - FONTVIEILLE



This document does not form part of any offer or contract. All measurements, areas and distances are approximate. The information and plans contained herein are believed to be correct, however, their accuracy is not guaranteed. The photographs show only certain parts of the property at the time they were taken. This offer is subject to change of price or other conditions, without prior notice.



## OFFICE - TITEN - FONTVIEILLE

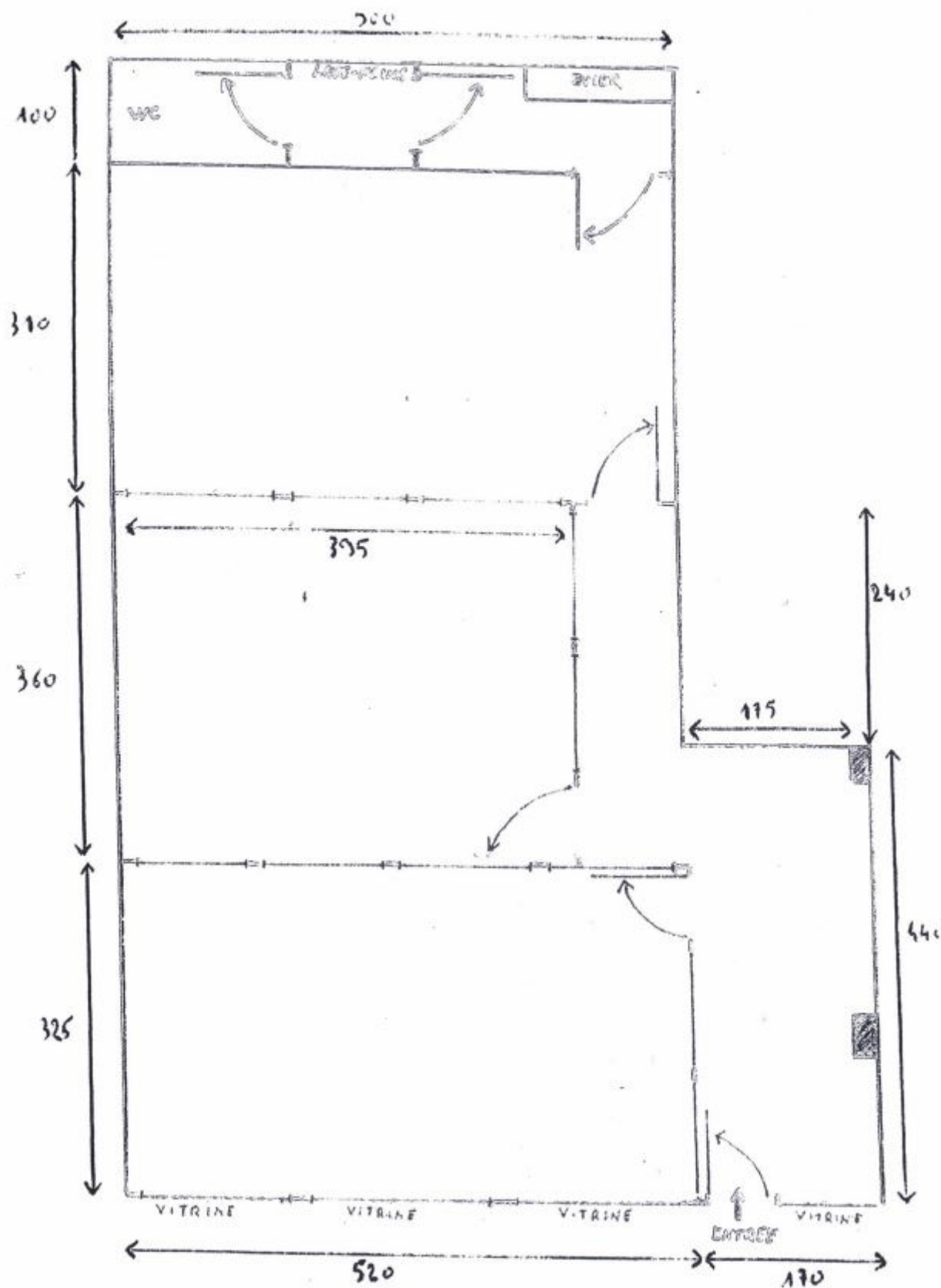


This document does not form part of any offer or contract. All measurements, areas and distances are approximate. The information and plans contained herein are believed to be correct, however, their accuracy is not guaranteed. The photographs show only certain parts of the property at the time they were taken. This offer is subject to change of price or other conditions, without prior notice.





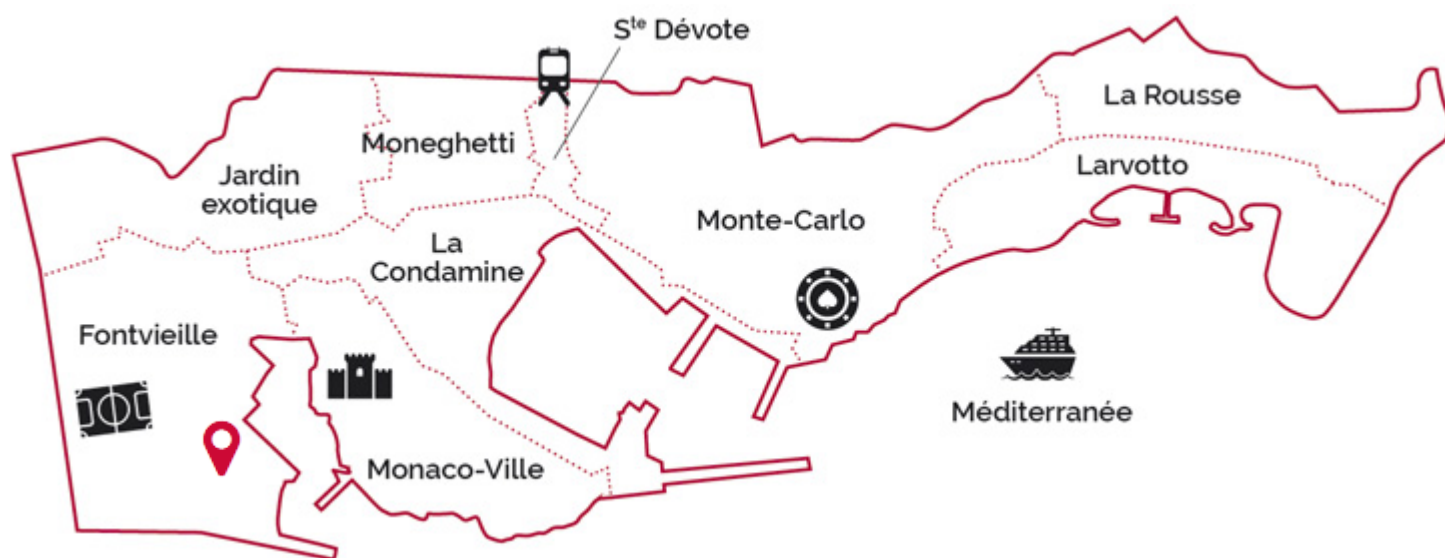
## OFFICE - TITEN - FONTVIEILLE



This document does not form part of any offer or contract. All measurements, areas and distances are approximate. The information and plans contained herein are believed to be correct, however, their accuracy is not guaranteed. The photographs show only certain parts of the property at the time they were taken. This offer is subject to change of price or other conditions, without prior notice.



## OFFICE - TITEN - FONTVIEILLE



This document does not form part of any offer or contract. All measurements, areas and distances are approximate. The information and plans contained herein are believed to be correct, however, their accuracy is not guaranteed. The photographs show only certain parts of the property at the time they were taken. This offer is subject to change of price or other conditions, without prior notice.