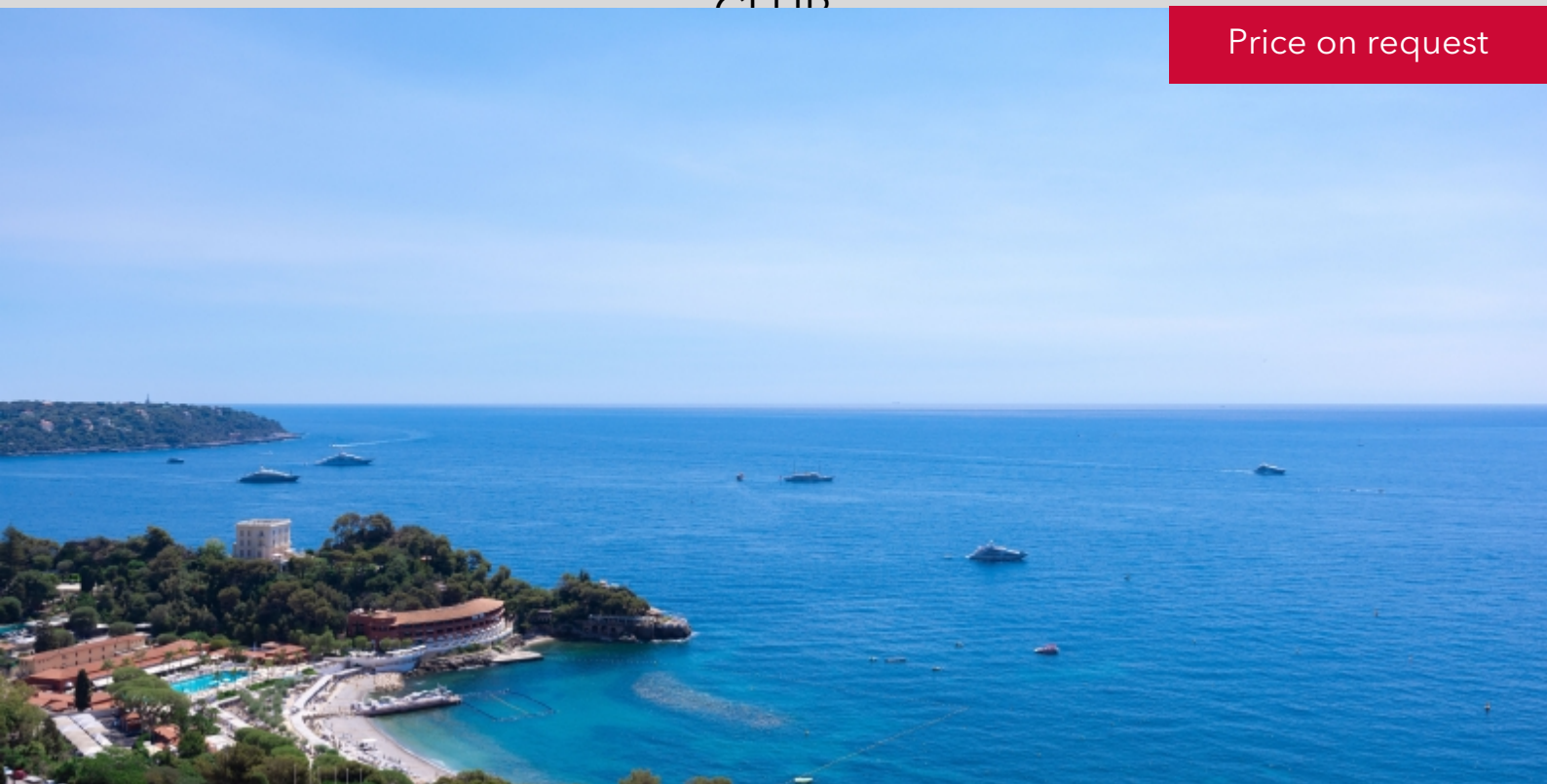


PARC SAINT ROMAN LA ROUSSE



PARC SAINT ROMAN, MASTER APARTMENT CLOSE TO THE COUNTRY CLUB

Price on request



DESCRIPTIVE :

Very beautiful apartment of Master following the meeting of several apartments, in high floor. Prestigious and high quality finishes. Located in a luxury residence at the east entrance of Monaco with swimming pool, sauna, landscaped park, close to the Monte Carlo country Club and easy access to the Monte Carlo Beach.

With a total surface of 276 sqm, it is composed of: entrance hall, spacious living room open on equipped kitchen and terrace, a bedroom with dressing room and complete shower room on terrace, a bedroom with complete shower room on balcony, a bedroom with complete bathroom, an office with complete bathroom.

It has a panoramic view to the Italian coast.

Sold with a cellar and two parkings.

REF: VM831

DETAILS



*276 m²



47 m²



Excellent condition



3



Facing east



Cap Martin, Sea, Panoramic view

*marketable surface area

This document does not form part of any offer or contract. All measurements, areas and distances are approximate. The information and plans contained herein are believed to be correct, however, their accuracy is not guaranteed. The photographs show only certain parts of the property at the time they were taken. This offer is subject to change of price or other conditions, without prior notice.

PARC SAINT ROMAN LA ROUSSE



PARC SAINT ROMAN, MASTER APARTMENT CLOSE TO THE COUNTRY CLUB



PARC SAINT ROMAN LA ROUSSE



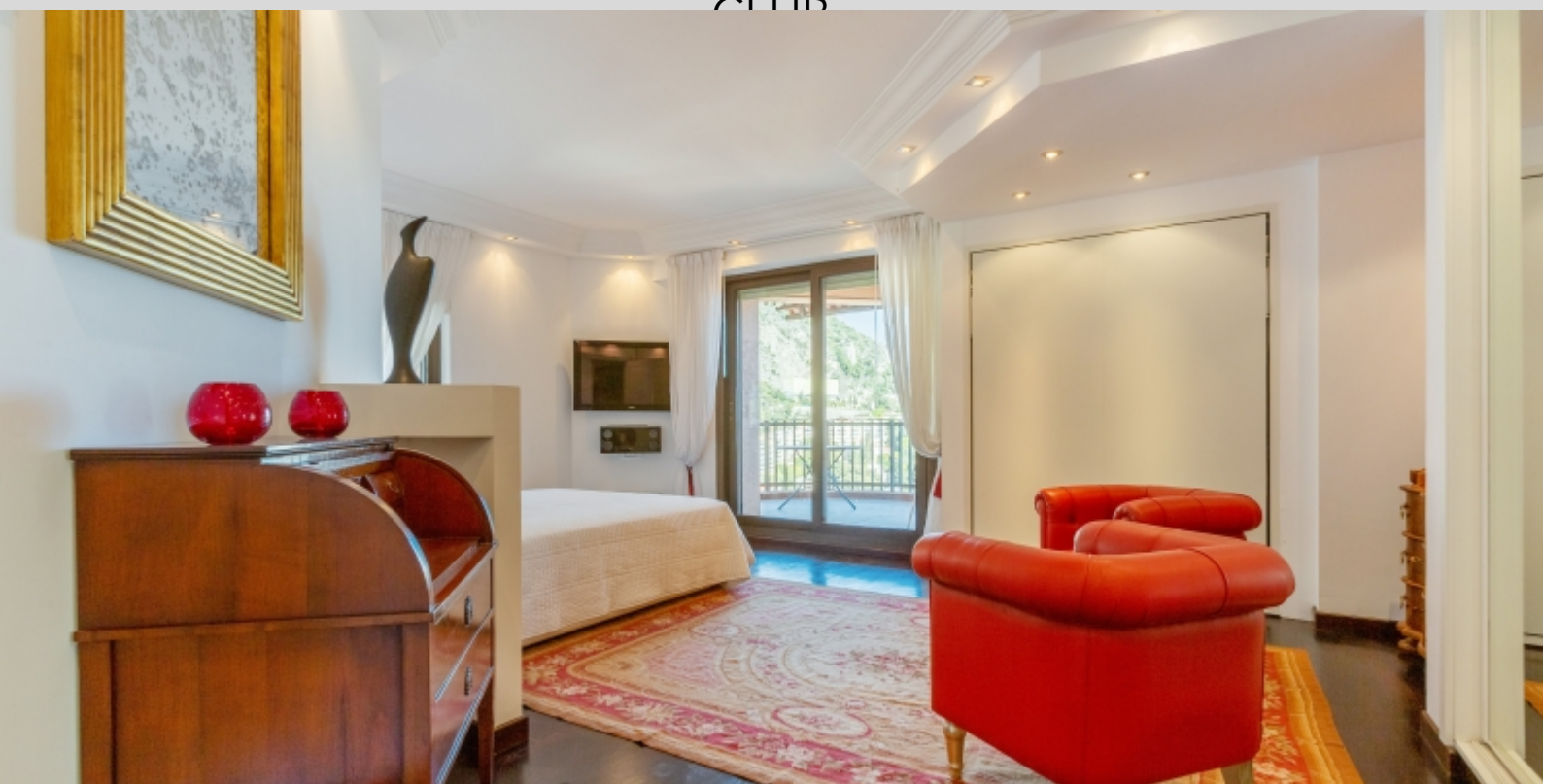
PARC SAINT ROMAN, MASTER APARTMENT CLOSE TO THE COUNTRY CLUB



PARC SAINT ROMAN LA ROUSSE



PARC SAINT ROMAN, MASTER APARTMENT CLOSE TO THE COUNTRY CLUB



PARC SAINT ROMAN LA ROUSSE



PARC SAINT ROMAN, MASTER APARTMENT CLOSE TO THE COUNTRY CLUB



PARC SAINT ROMAN LA ROUSSE



PARC SAINT ROMAN, MASTER APARTMENT CLOSE TO THE COUNTRY CLUB



PARC SAINT ROMAN LA ROUSSE



PARC SAINT ROMAN, MASTER APARTMENT CLOSE TO THE COUNTRY CLUB



PARC SAINT ROMAN LA ROUSSE



PARC SAINT ROMAN, MASTER APARTMENT CLOSE TO THE COUNTRY CLUB



PARC SAINT ROMAN LA ROUSSE

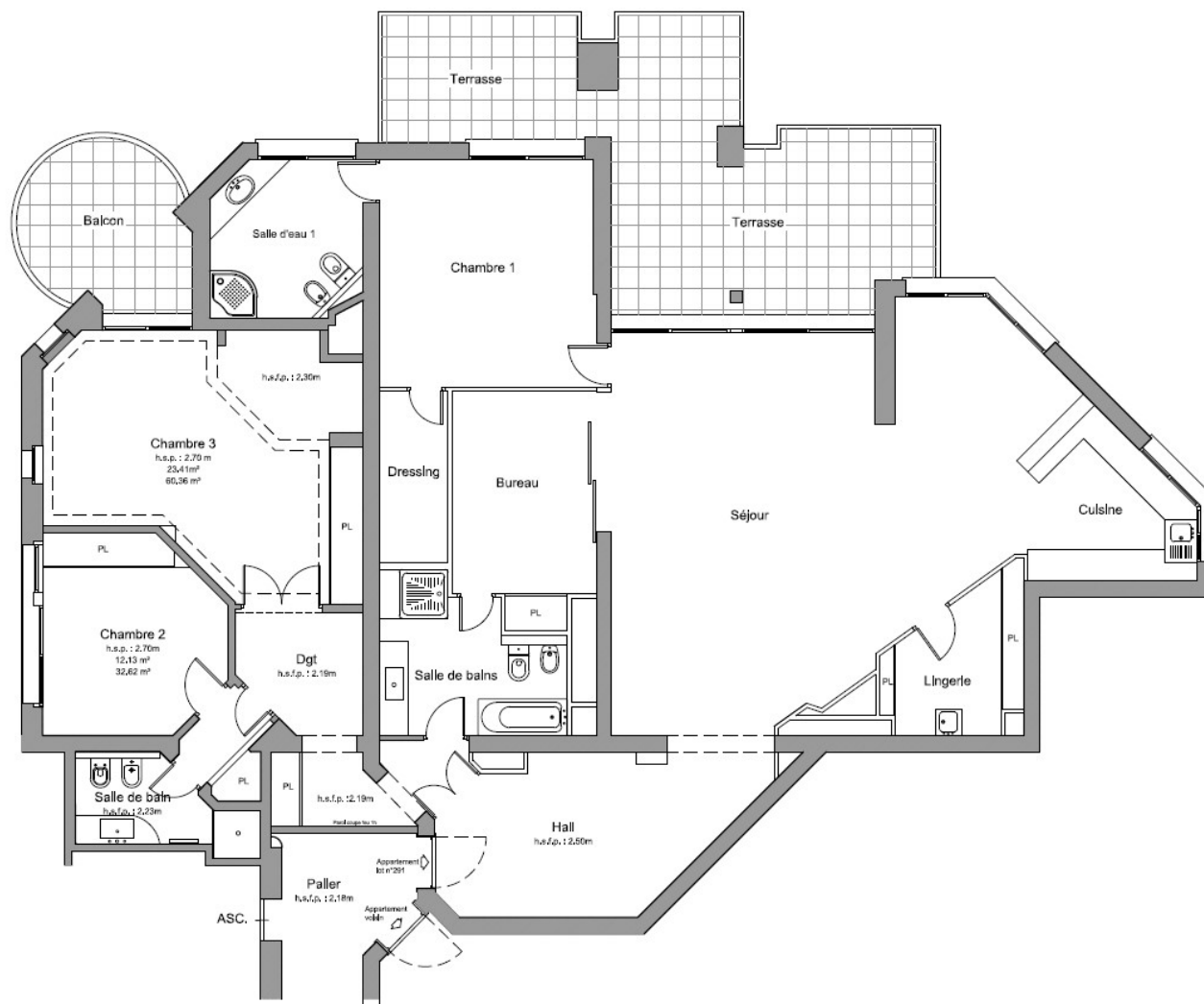


PARC SAINT ROMAN, MASTER APARTMENT CLOSE TO THE COUNTRY CLUB





PARC SAINT ROMAN, MASTER APARTMENT CLOSE TO THE COUNTRY CLUB

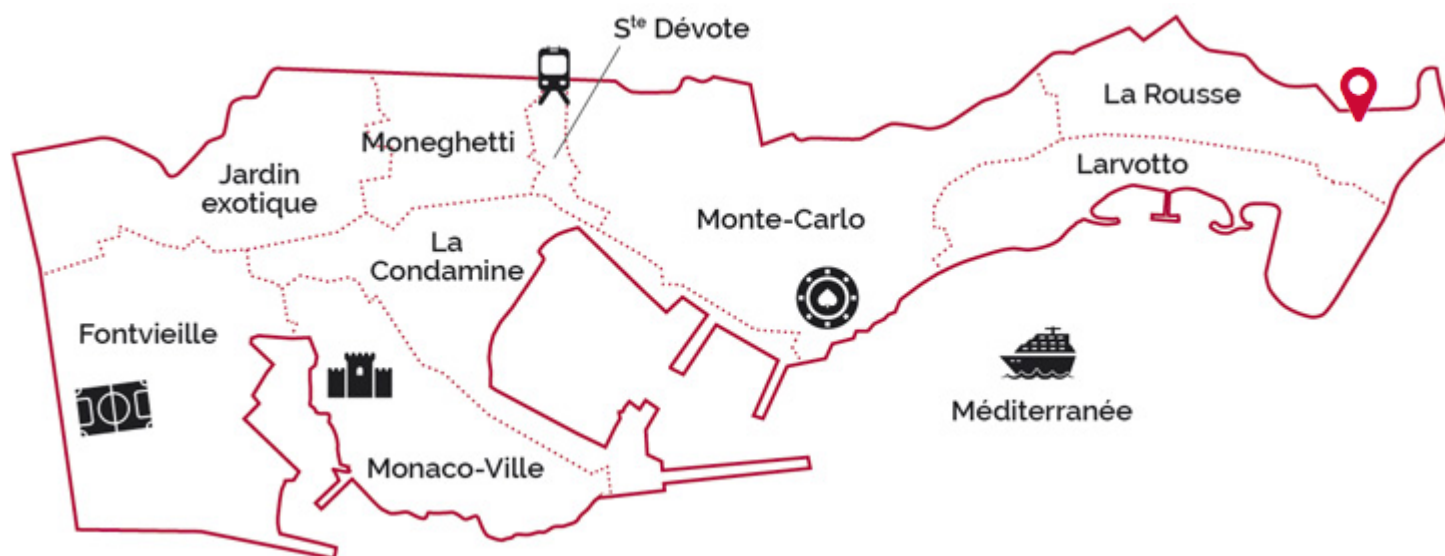


PARC SAINT ROMAN

LA ROUSSE



PARC SAINT ROMAN, MASTER APARTMENT CLOSE TO THE COUNTRY CLUB



legal This document does not form part of any offer or contract. All measurements, areas and distances are approximate. The information and plans contained herein are believed to be correct, however, their accuracy is not guaranteed. The photographs show only certain parts of the property at the time they were taken. This offer is subject to change of price or other conditions, without prior notice.

Dotta.

MONACO PRIVATE REAL ESTATE

www.dotta.mc

+377 97 98 20 00 - info@dotta.mc

5 bis avenue Princesse Alice - BP 98005 - Monaco Cedex