



SUPERBO BILOCALE VICINO A MONACO

1 700 €/mese



DESCRITTIVO :

Stupendo appartamento di 2 LOCALI idealmente posizionato sulle alture di Monaco, in un nuovo residence appena consegnato. L'appartamento beneficia di bei volumi, un'ampia terrazza e una vista molto bella sul verde, sulla città e sul mare.

L'appartamento, con una superficie di 47,06 m², è composto da: un ingresso, un soggiorno con cucina semi-attrezzata a vista, una camera da letto, un bagno con doccia e un bellissimo terrazzo di circa 17 m².

L'appartamento viene affittato con posto auto posto allo stesso piano dell'appartamento e cantina.

Il residence dispone di una piscina. Accesso a Monaco possibile a piedi e in autobus.

REF: LF263

INFORMAZIONI



*47 m²



17 m²



buone condizioni



1



Esposizione sud



Vista mare, giardini

CARICHI

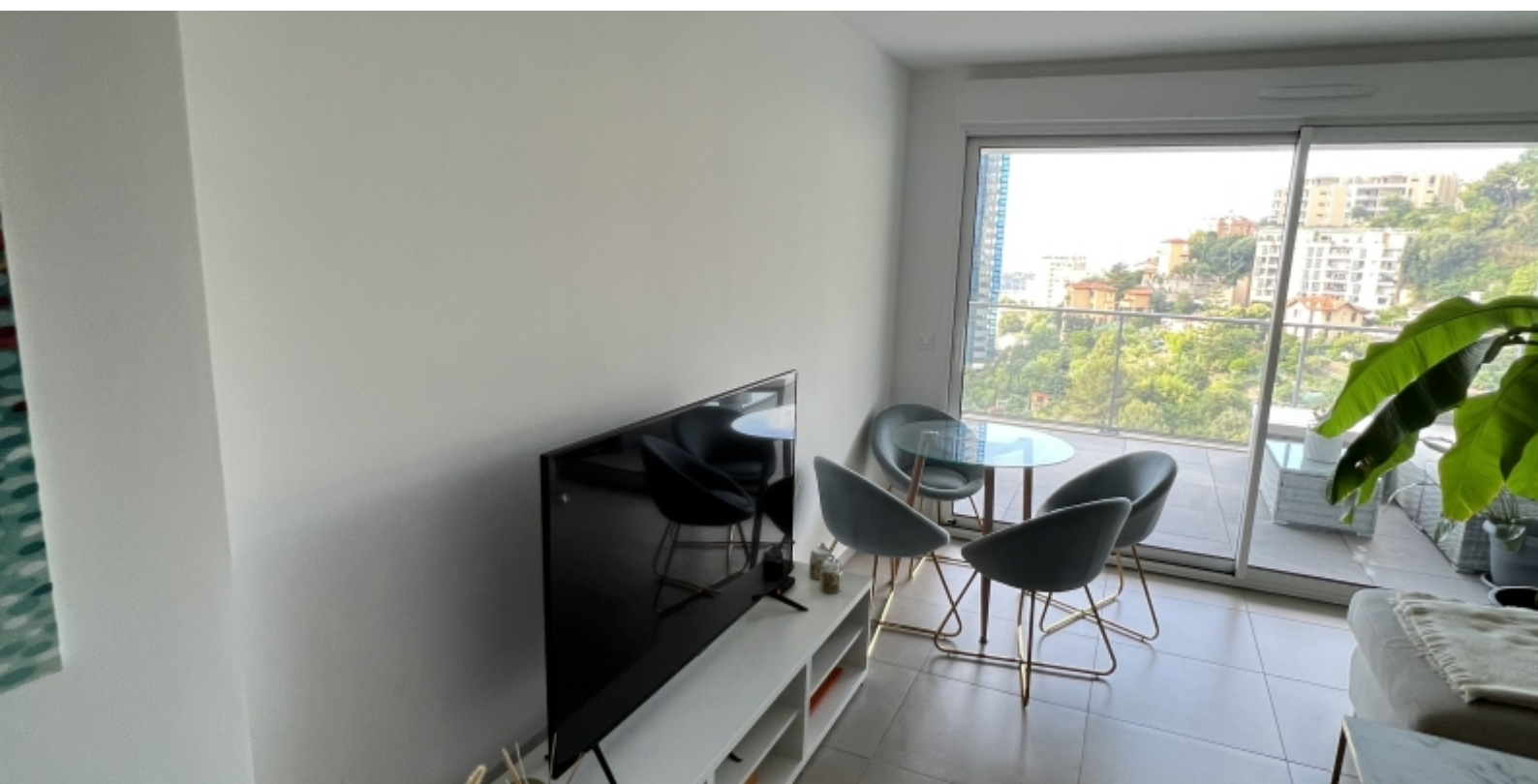
120 €/mois

*superficie commercializzabile

This document does not form part of any offer or contract. All measurements, areas and distances are approximate. The information and plans contained herein are believed to be correct, however, their accuracy is not guaranteed. The photographs show only certain parts of the property at the time they were taken. This offer is subject to change of price or other conditions, without prior notice.



SUPERBO BILOCALE VICINO A MONACO



This document does not form part of any offer or contract. All measurements, areas and distances are approximate. The information and plans contained herein are believed to be correct, however, their accuracy is not guaranteed. The photographs show only certain parts of the property at the time they were taken. This offer is subject to change of price or other conditions, without prior notice.



SUPERBO BILOCALE VICINO A MONACO



This document does not form part of any offer or contract. All measurements, areas and distances are approximate. The information and plans contained herein are believed to be correct, however, their accuracy is not guaranteed. The photographs show only certain parts of the property at the time they were taken. This offer is subject to change of price or other conditions, without prior notice.



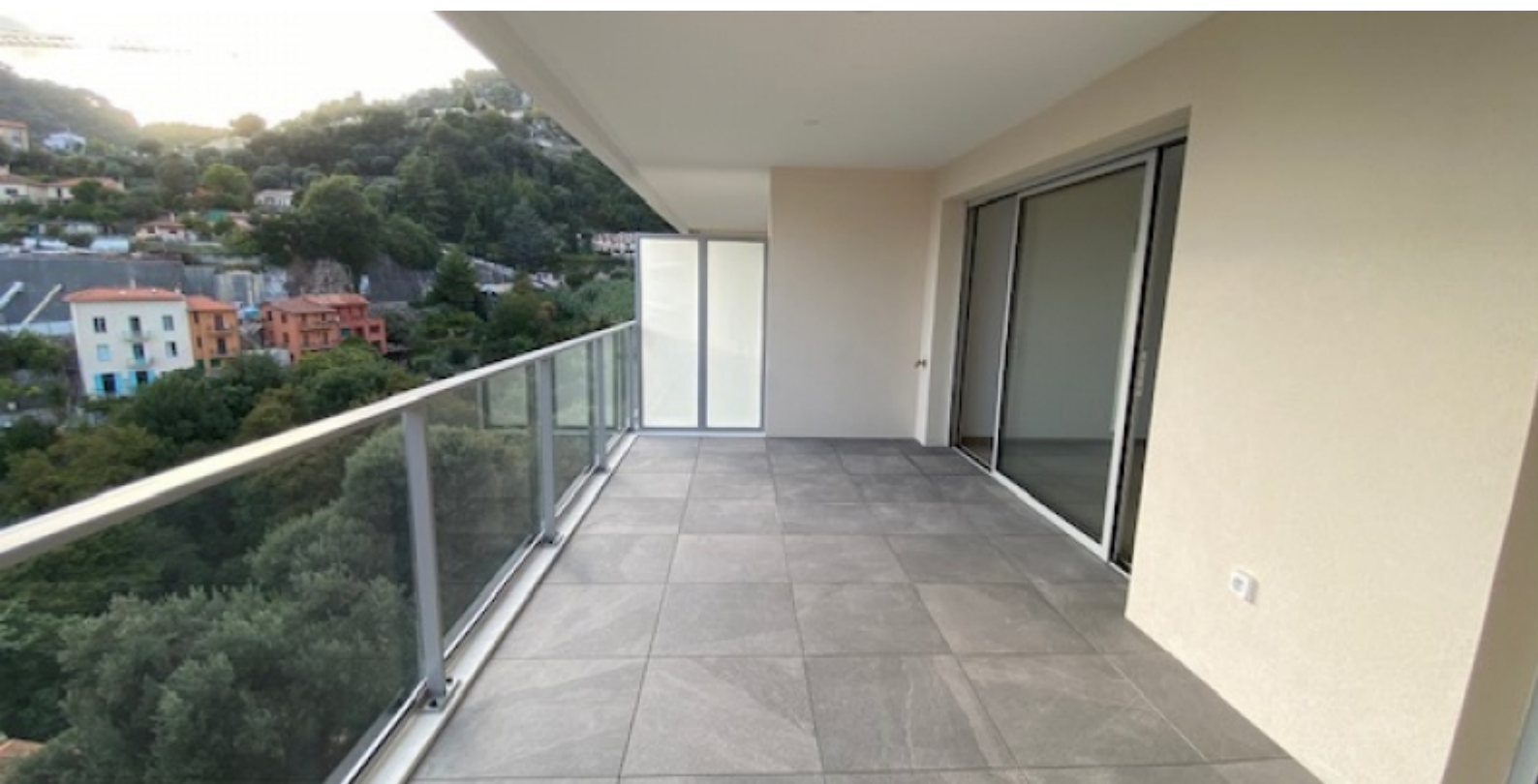
SUPERBO BILOCALE VICINO A MONACO



This document does not form part of any offer or contract. All measurements, areas and distances are approximate. The information and plans contained herein are believed to be correct, however, their accuracy is not guaranteed. The photographs show only certain parts of the property at the time they were taken. This offer is subject to change of price or other conditions, without prior notice.



SUPERBO BILOCALE VICINO A MONACO



This document does not form part of any offer or contract. All measurements, areas and distances are approximate. The information and plans contained herein are believed to be correct, however, their accuracy is not guaranteed. The photographs show only certain parts of the property at the time they were taken. This offer is subject to change of price or other conditions, without prior notice.



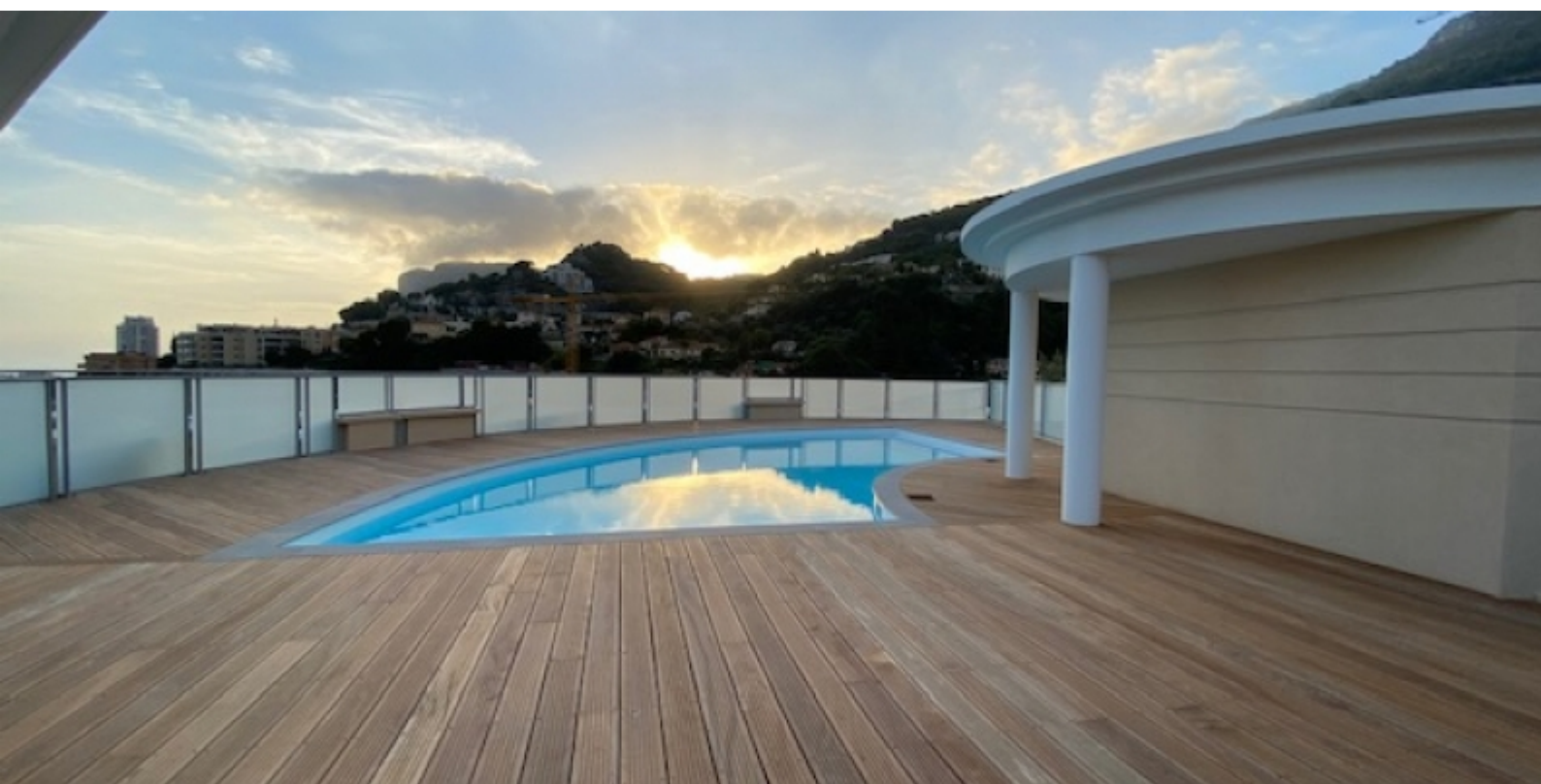
SUPERBO BILOCALE VICINO A MONACO



This document does not form part of any offer or contract. All measurements, areas and distances are approximate. The information and plans contained herein are believed to be correct, however, their accuracy is not guaranteed. The photographs show only certain parts of the property at the time they were taken. This offer is subject to change of price or other conditions, without prior notice.



SUPERBO BILOCALE VICINO A MONACO



This document does not form part of any offer or contract. All measurements, areas and distances are approximate. The information and plans contained herein are believed to be correct, however, their accuracy is not guaranteed. The photographs show only certain parts of the property at the time they were taken. This offer is subject to change of price or other conditions, without prior notice.



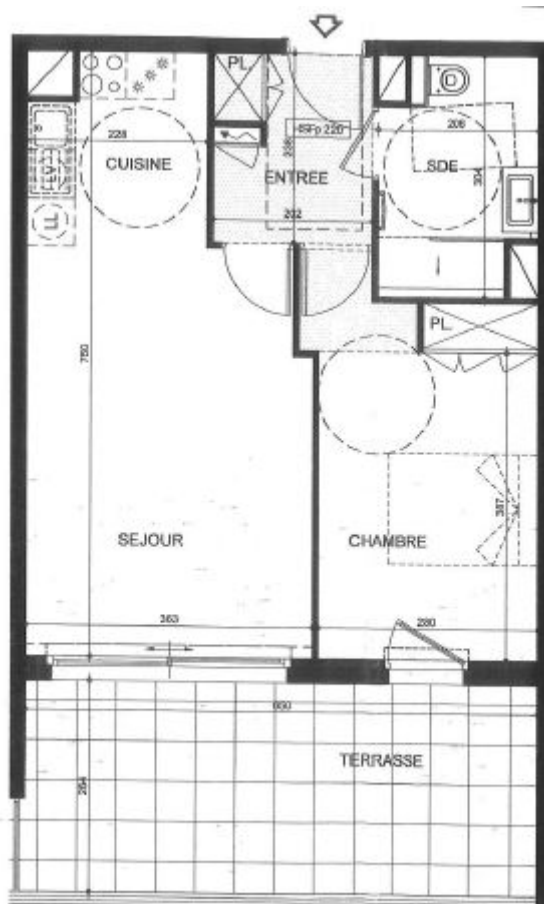
SUPERBO BILOCALE VICINO A MONACO



This document does not form part of any offer or contract. All measurements, areas and distances are approximate. The information and plans contained herein are believed to be correct, however, their accuracy is not guaranteed. The photographs show only certain parts of the property at the time they were taken. This offer is subject to change of price or other conditions, without prior notice.



SUPERBO BILOCALE VICINO A MONACO



This document does not form part of any offer or contract. All measurements, areas and distances are approximate. The information and plans contained herein are believed to be correct, however, their accuracy is not guaranteed. The photographs show only certain parts of the property at the time they were taken. This offer is subject to change of price or other conditions, without prior notice.



SUPERBO BILOCALE VICINO A MONACO

Consommation énergétique (en énergie primaire) pour le chauffage, la production d'eau chaude sanitaire et le refroidissement, déduction faite de la production d'électricité à demeure	Emission des gaz à effet de serre (GES) pour le chauffage, la production d'eau chaude sanitaire et le refroidissement
Consommation conventionnelle :	Estimation des émissions :
<div style="display: flex; justify-content: space-between;"> <div data-bbox="135 560 582 1019"> <p>Logement économe</p> <p>< 50 A</p> <p>51 à 80 B</p> <p>91 à 150 C</p> <p>151 à 230 D</p> <p>231 à 330 E</p> <p>331 à 450 F</p> <p>> 450 G</p> <p>Logement énergivore</p> </div> <div data-bbox="590 560 702 1019"> <p>Logement</p> <p>42</p> <p>kWh_{EP}/m².an</p> </div> </div>	<div style="display: flex; justify-content: space-between;"> <div data-bbox="917 560 1356 1019"> <p>Faible émission de GES</p> <p>≤ 5 A</p> <p>6 à 10 B</p> <p>11 à 20 C</p> <p>21 à 35 D</p> <p>36 à 55 E</p> <p>56 à 80 F</p> <p>> 80 G</p> <p>Forte émission de GES</p> </div> <div data-bbox="1364 560 1476 1019"> <p>Logement</p> <p>1</p> <p>kg_{éqCO₂}/m².an</p> </div> </div>

This document does not form part of any offer or contract. All measurements, areas and distances are approximate. The information and plans contained herein are believed to be correct, however, their accuracy is not guaranteed. The photographs show only certain parts of the property at the time they were taken. This offer is subject to change of price or other conditions, without prior notice.