



Nel famoso complesso del METROPOLE

38 000 €/mese



DESCRITTIVO :

Magnifico 6 vani situato in un residence stile Belle Epoque, con servizio HOTEL, finiture di classe, situato nel cuore del Carré d'Or, vicino al Casinò all'Hotel de Paris, ed al ONE Monte-Carlo, possiede una bella piscina ad acqua di mare, portierato e sicurezza 24h/7gg.

L'appartamento di una superficie totale di 325 m² è composto da: ingresso, ampio soggiorno con loggia, sala da pranzo, bella camera matrimoniale con bagno adiacente che si apre sulla terrazza, tre camere da letto con armadi a muro, due bagni completi, bagno con doccia, cucina attrezzata, bagno per gli ospiti.

Ha una spaziosa loggia di 44 m² con vista sui giardini del Casino'.

Affittato con una cantina nel 4 ° seminterrato e due posti auto nel 3 ° seminterrato.

REF: LM920

INFORMAZIONI



*325 m²



44 m²



condizioni eccellenti



4



Esposizione ovest



Vista giardini

CARICHI

5 200 €/mois

*superficie commercializzabile

This document does not form part of any offer or contract. All measurements, areas and distances are approximate. The information and plans contained herein are believed to be correct, however, their accuracy is not guaranteed. The photographs show only certain parts of the property at the time they were taken. This offer is subject to change of price or other conditions, without prior notice.



Nel famoso complesso del METROPOLE



This document does not form part of any offer or contract. All measurements, areas and distances are approximate. The information and plans contained herein are believed to be correct, however, their accuracy is not guaranteed. The photographs show only certain parts of the property at the time they were taken. This offer is subject to change of price or other conditions, without prior notice.



Nel famoso complesso del METROPOLE



This document does not form part of any offer or contract. All measurements, areas and distances are approximate. The information and plans contained herein are believed to be correct, however, their accuracy is not guaranteed. The photographs show only certain parts of the property at the time they were taken. This offer is subject to change of price or other conditions, without prior notice.



Nel famoso complesso del METROPOLE



This document does not form part of any offer or contract. All measurements, areas and distances are approximate. The information and plans contained herein are believed to be correct, however, their accuracy is not guaranteed. The photographs show only certain parts of the property at the time they were taken. This offer is subject to change of price or other conditions, without prior notice.



Nel famoso complesso del METROPOLE



This document does not form part of any offer or contract. All measurements, areas and distances are approximate. The information and plans contained herein are believed to be correct, however, their accuracy is not guaranteed. The photographs show only certain parts of the property at the time they were taken. This offer is subject to change of price or other conditions, without prior notice.



Nel famoso complesso del METROPOLE



This document does not form part of any offer or contract. All measurements, areas and distances are approximate. The information and plans contained herein are believed to be correct, however, their accuracy is not guaranteed. The photographs show only certain parts of the property at the time they were taken. This offer is subject to change of price or other conditions, without prior notice.



Nel famoso complesso del METROPOLE



This document does not form part of any offer or contract. All measurements, areas and distances are approximate. The information and plans contained herein are believed to be correct, however, their accuracy is not guaranteed. The photographs show only certain parts of the property at the time they were taken. This offer is subject to change of price or other conditions, without prior notice.



Nel famoso complesso del METROPOLE



This document does not form part of any offer or contract. All measurements, areas and distances are approximate. The information and plans contained herein are believed to be correct, however, their accuracy is not guaranteed. The photographs show only certain parts of the property at the time they were taken. This offer is subject to change of price or other conditions, without prior notice.



Nel famoso complesso del METROPOLE



This document does not form part of any offer or contract. All measurements, areas and distances are approximate. The information and plans contained herein are believed to be correct, however, their accuracy is not guaranteed. The photographs show only certain parts of the property at the time they were taken. This offer is subject to change of price or other conditions, without prior notice.



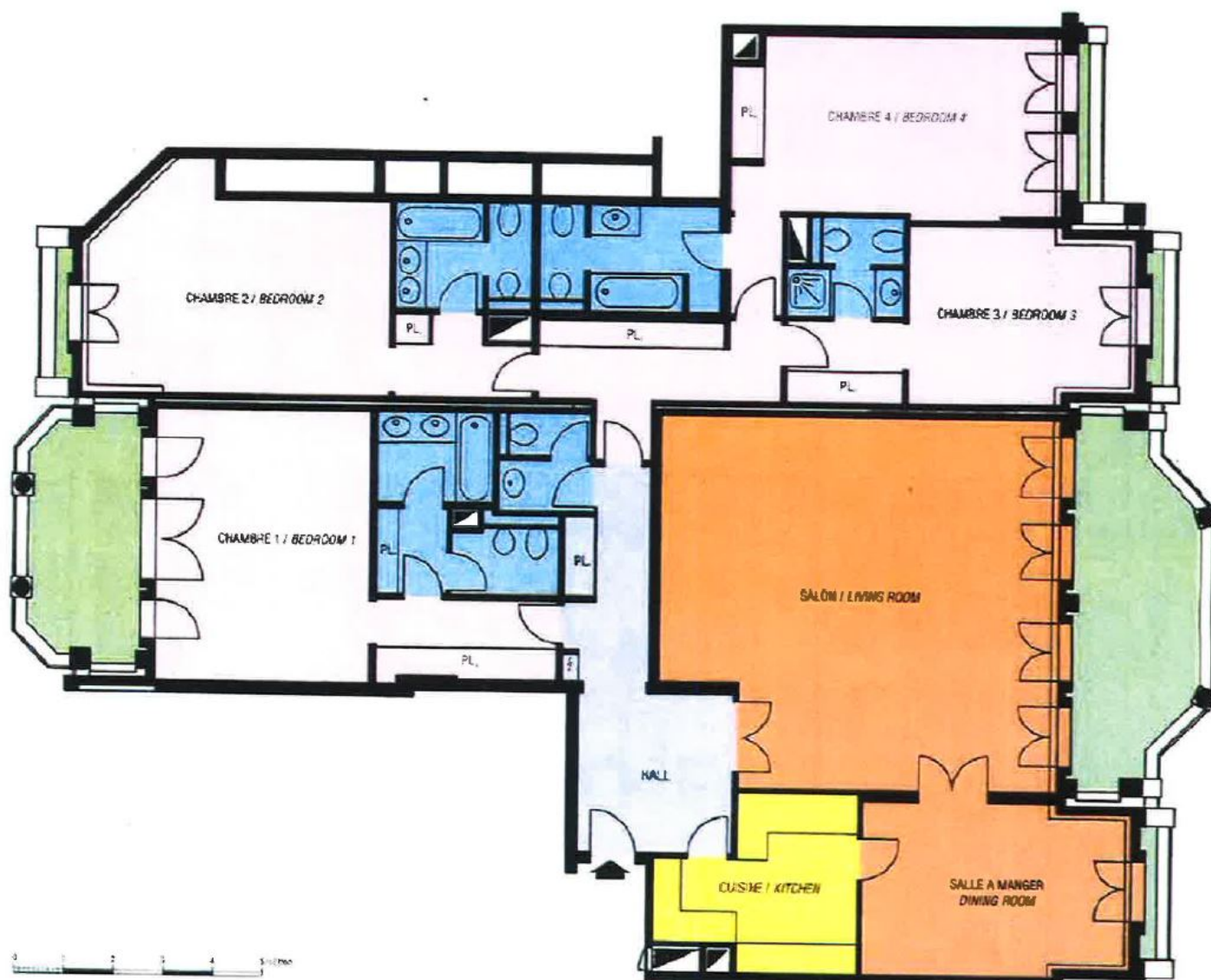
Nel famoso complesso del METROPOLE



This document does not form part of any offer or contract. All measurements, areas and distances are approximate. The information and plans contained herein are believed to be correct, however, their accuracy is not guaranteed. The photographs show only certain parts of the property at the time they were taken. This offer is subject to change of price or other conditions, without prior notice.



Nel famoso complesso del METROPOLE



This document does not form part of any offer or contract. All measurements, areas and distances are approximate. The information and plans contained herein are believed to be correct, however, their accuracy is not guaranteed. The photographs show only certain parts of the property at the time they were taken. This offer is subject to change of price or other conditions, without prior notice.