



NOMAD , NY 10010 CON VISTA PANORAMICA SUL MADISON SQUARE PARK

Prezzo su richiesta



DESCRITTIVO :

Accogliente appartamento ristrutturato con 1 camera da letto situato, ad un piano elevato , in una delle posizioni più ambite di New York: a pochi passi da Madison Square Park, dal Flatiron Building, dalla Rizzoli Art Library e dai principali mezzi di trasporto.

Di una superficie totale di 750sqf è composto da: ingresso con armadi, ampio soggiorno che si apre sul balcone, una bella camera da letto con armadi, una cucina interamente arredata aperta sul soggiorno, un bellissimo bagno completo con finestra, armadi. Portierato 24h/7, Fitness.

Ha un balcone con vista panoramica su Madison Square Park, fino al New Jersey.

REF: VE17

INFORMAZIONI



*62 m²



3 m²



perfette condizioni



1



Esposizione ovest



Vista giardini, panoramica

*superficie commercializzabile

This document does not form part of any offer or contract. All measurements, areas and distances are approximate. The information and plans contained herein are believed to be correct, however, their accuracy is not guaranteed. The photographs show only certain parts of the property at the time they were taken. This offer is subject to change of price or other conditions, without prior notice.



NOMAD , NY 10010 CON VISTA PANORAMICA SUL MADISON SQUARE PARK



This document does not form part of any offer or contract. All measurements, areas and distances are approximate. The information and plans contained herein are believed to be correct, however, their accuracy is not guaranteed. The photographs show only certain parts of the property at the time they were taken. This offer is subject to change of price or other conditions, without prior notice.



NOMAD , NY 10010 CON VISTA PANORAMICA SUL MADISON SQUARE PARK



This document does not form part of any offer or contract. All measurements, areas and distances are approximate. The information and plans contained herein are believed to be correct, however, their accuracy is not guaranteed. The photographs show only certain parts of the property at the time they were taken. This offer is subject to change of price or other conditions, without prior notice.



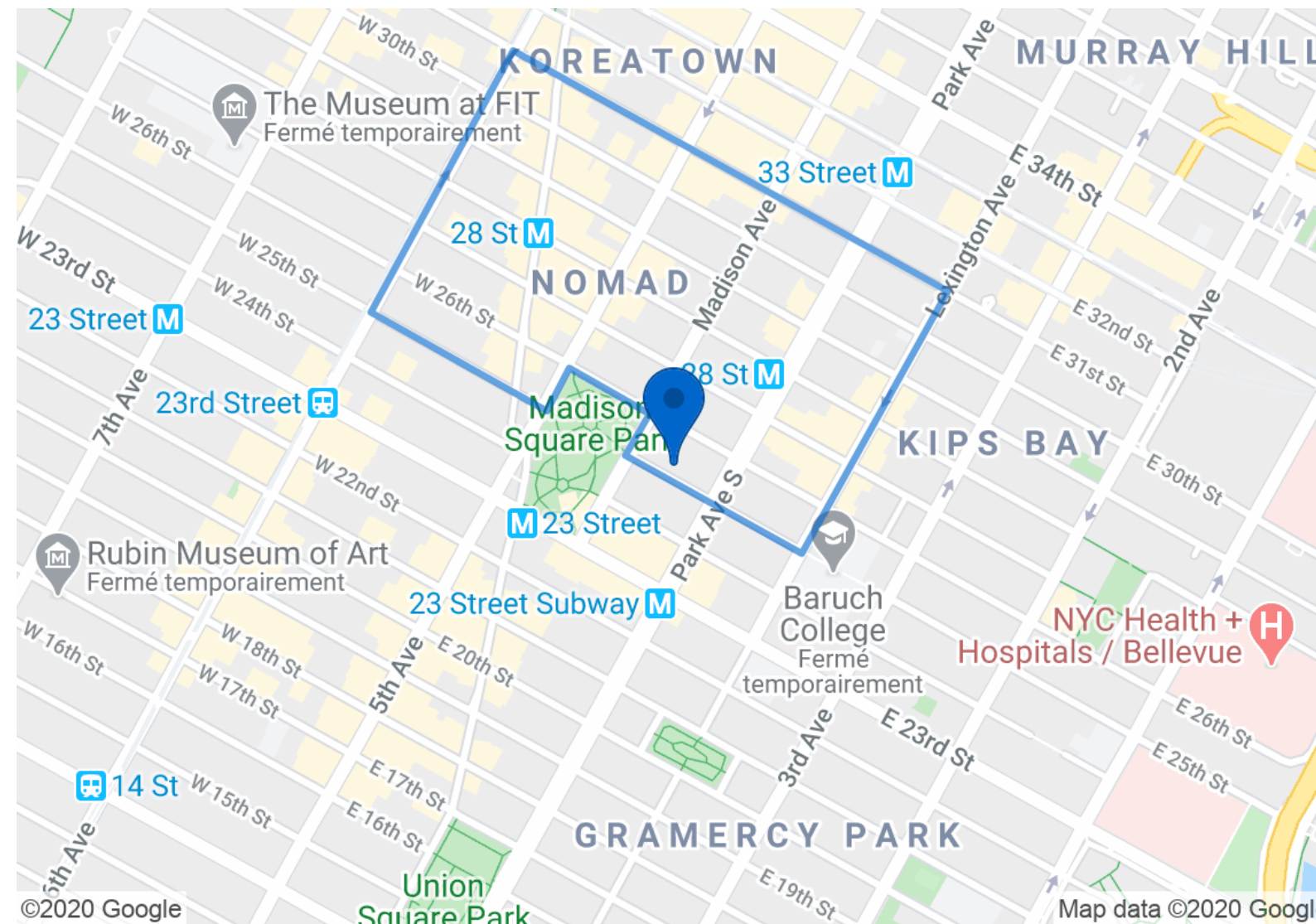
NOMAD , NY 10010 CON VISTA PANORAMICA SUL MADISON SQUARE
PARK



This document does not form part of any offer or contract. All measurements, areas and distances are approximate. The information and plans contained herein are believed to be correct, however, their accuracy is not guaranteed. The photographs show only certain parts of the property at the time they were taken. This offer is subject to change of price or other conditions, without prior notice.



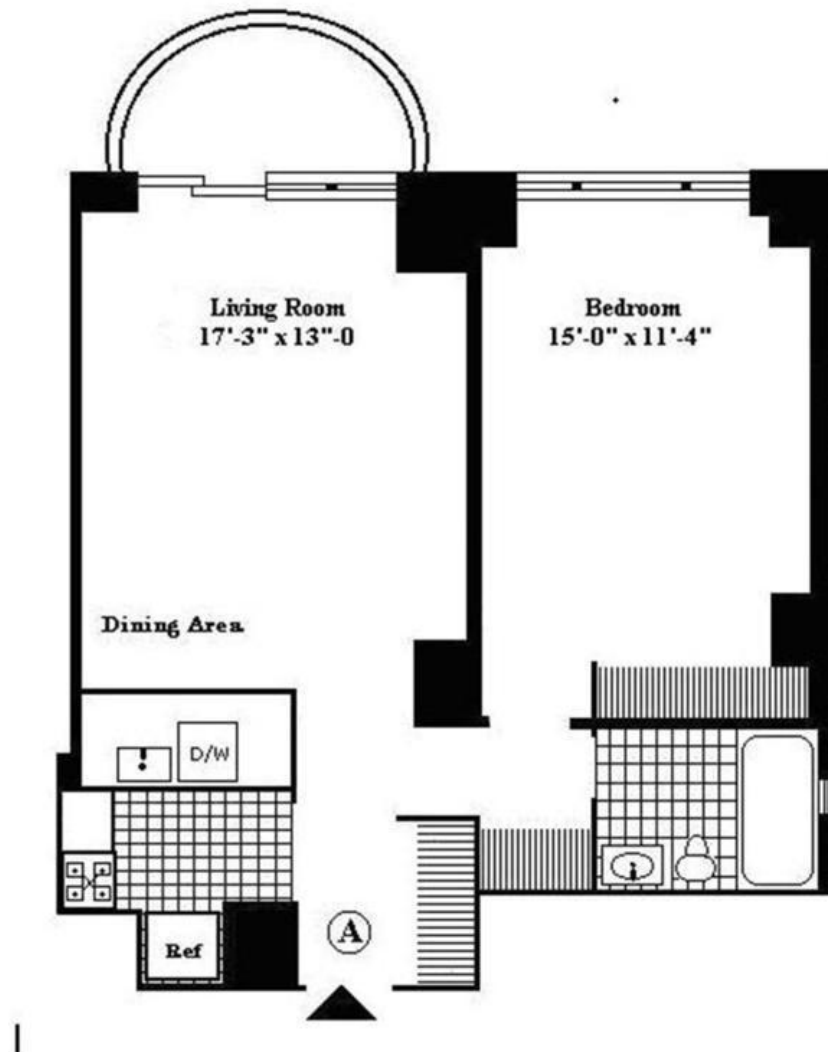
NOMAD , NY 10010 CON VISTA PANORAMICA SUL MADISON SQUARE PARK



This document does not form part of any offer or contract. All measurements, areas and distances are approximate. The information and plans contained herein are believed to be correct, however, their accuracy is not guaranteed. The photographs show only certain parts of the property at the time they were taken. This offer is subject to change of price or other conditions, without prior notice.



NOMAD , NY 10010 CON VISTA PANORAMICA SUL MADISON SQUARE
PARK



This document does not form part of any offer or contract. All measurements, areas and distances are approximate. The information and plans contained herein are believed to be correct, however, their accuracy is not guaranteed. The photographs show only certain parts of the property at the time they were taken. This offer is subject to change of price or other conditions, without prior notice.