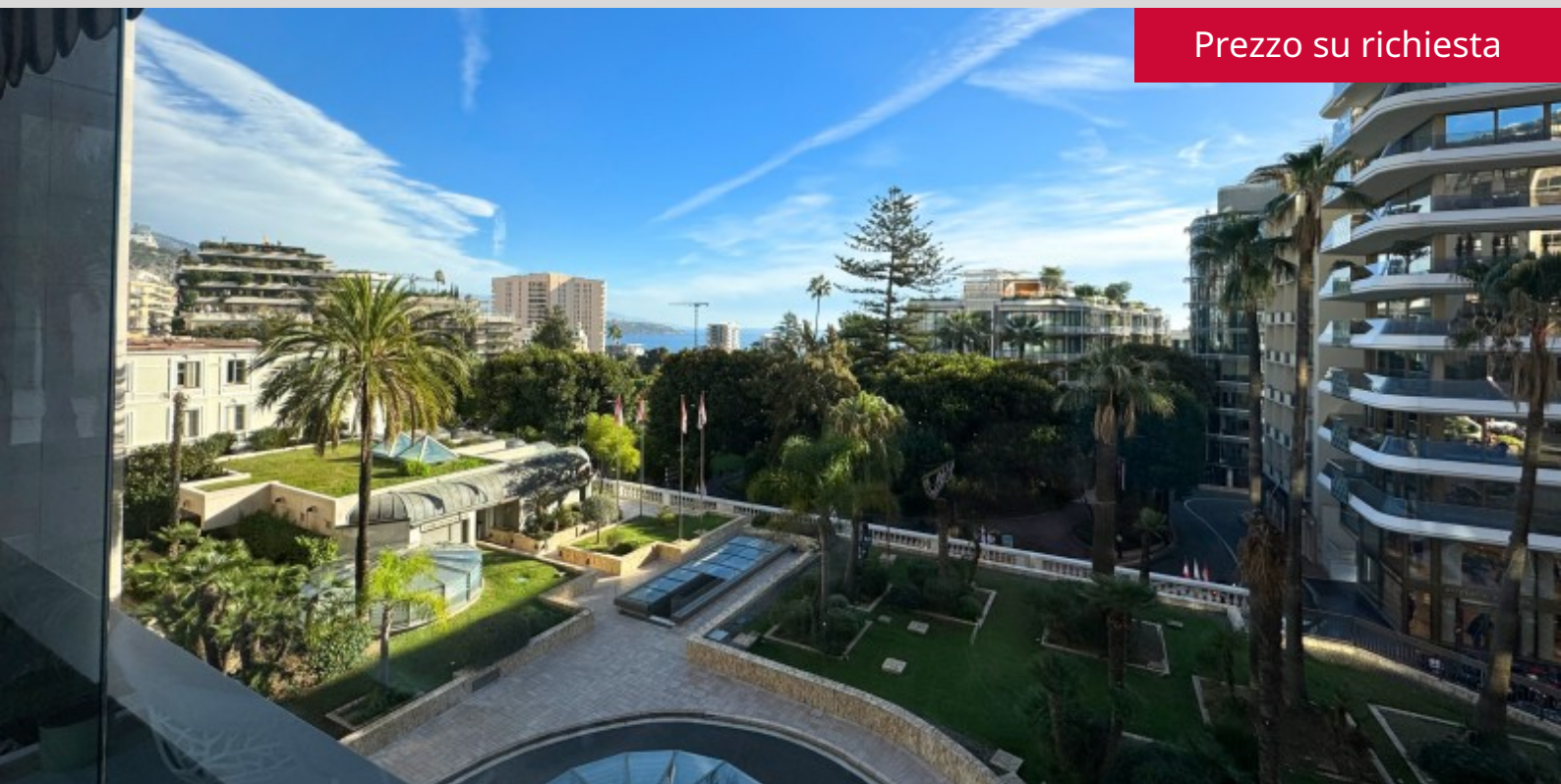




## Ideale Pied à terre nel Carré d'Or

Prezzo su richiesta



### DESCRITTIVO :

Delizioso 2 LOCALI, completamente ristrutturato e trasformato in loft, in una prestigiosa residenza situata in bordura dei giardini del Casinò e degli alberghi più rinomati del Principato, con portierato 24 ore su 24, una bella piscina interna riscaldata funzionante tutto l'anno , una sauna ed una sala fitness. DI una superficie totale di 54 mq, si compone di: ingresso, soggiorno con bella loggia, camera da letto, bagno con doccia , angolo cottura attrezzato , armadi. Gode di una piacevole terrazza chiusa a veranda della superficie totale di 13 mq con vista sui giardini del Casinò. Venduto con cantina e parcheggio.

**REF: VM2108**

### INFORMAZIONI



\*54 m<sup>2</sup>



13 m<sup>2</sup>



nuovo



Esposizione est



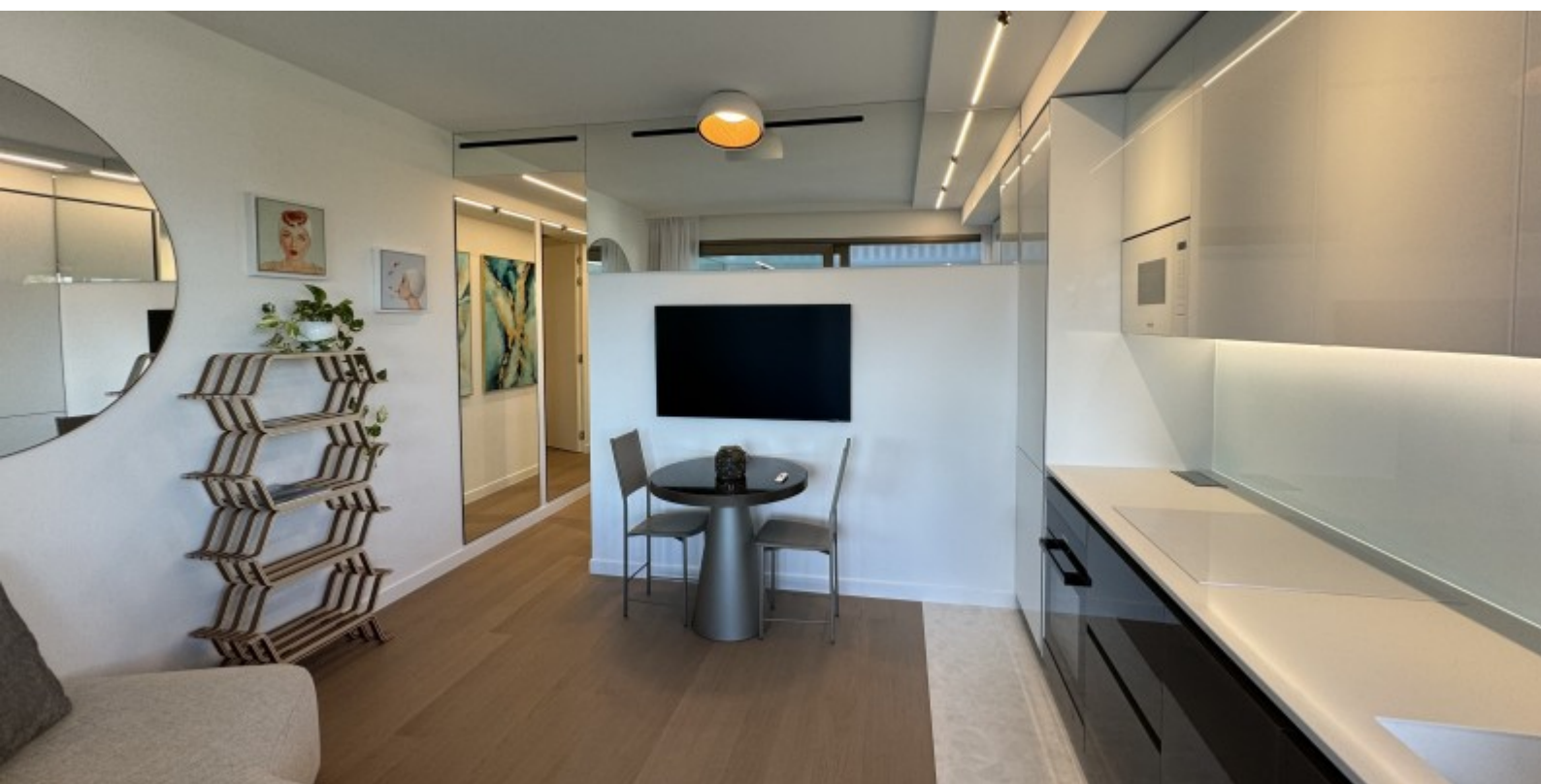
Vista casino', giardini

\*superficie commercializzabile

This document does not form part of any offer or contract. All measurements, areas and distances are approximate. The information and plans contained herein are believed to be correct, however, their accuracy is not guaranteed. The photographs show only certain parts of the property at the time they were taken. This offer is subject to change of price or other conditions, without prior notice.



## Ideale Pied à terre nel Carré d'Or

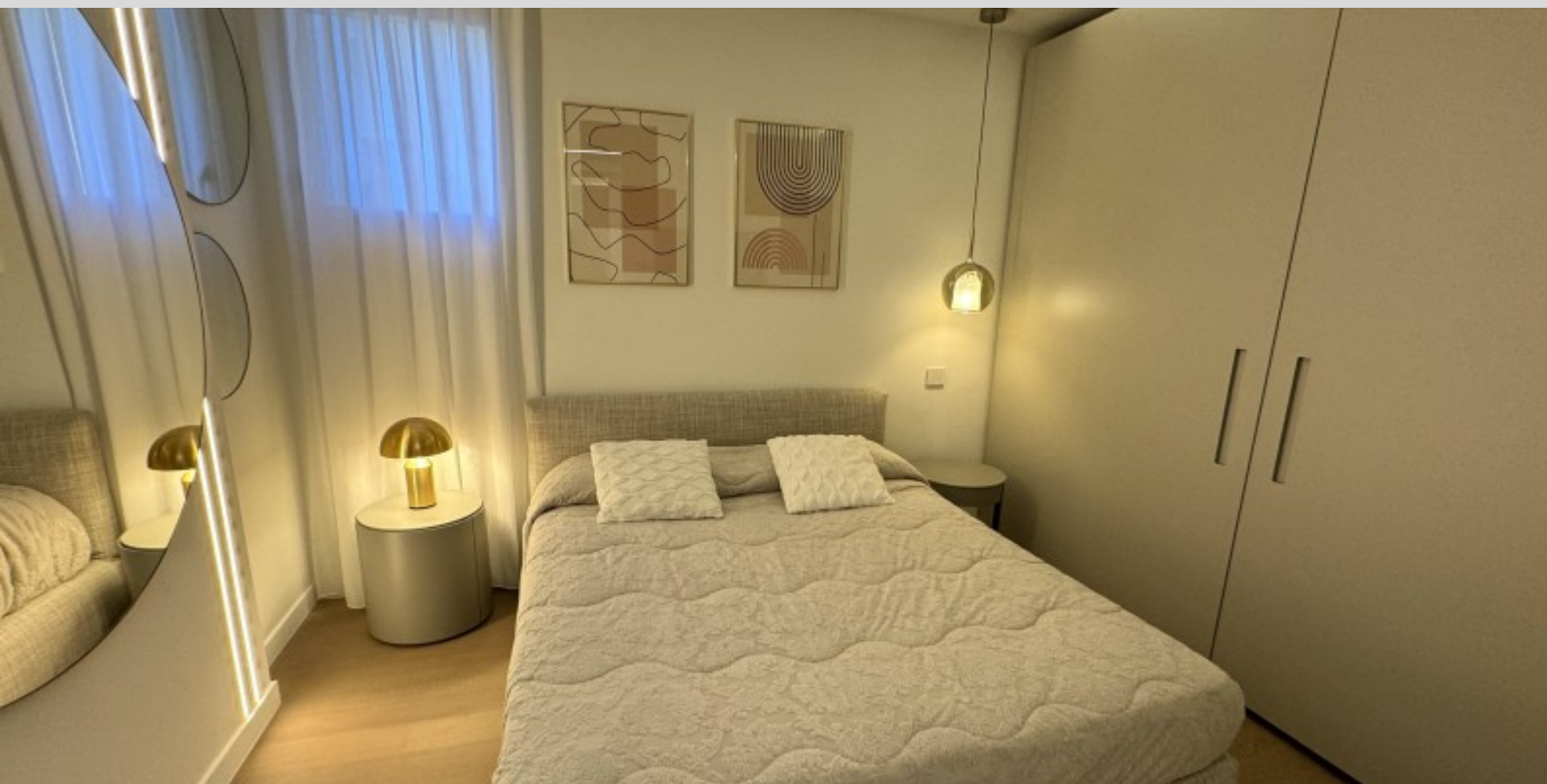


This document does not form part of any offer or contract. All measurements, areas and distances are approximate. The information and plans contained herein are believed to be correct, however, their accuracy is not guaranteed. The photographs show only certain parts of the property at the time they were taken. This offer is subject to change of price or other conditions, without prior notice.





## Ideale Pied à terre nel Carré d'Or



This document does not form part of any offer or contract. All measurements, areas and distances are approximate. The information and plans contained herein are believed to be correct, however, their accuracy is not guaranteed. The photographs show only certain parts of the property at the time they were taken. This offer is subject to change of price or other conditions, without prior notice.





## Ideale Pied à terre nel Carré d'Or



This document does not form part of any offer or contract. All measurements, areas and distances are approximate. The information and plans contained herein are believed to be correct, however, their accuracy is not guaranteed. The photographs show only certain parts of the property at the time they were taken. This offer is subject to change of price or other conditions, without prior notice.



## Ideale Pied à terre nel Carré d'Or

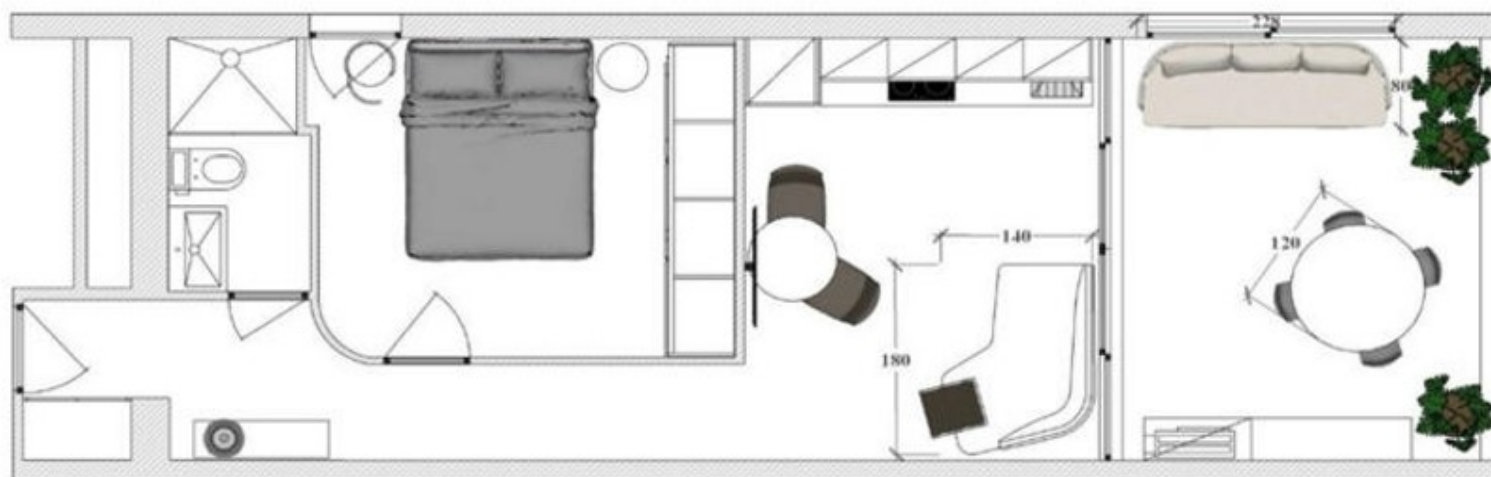


This document does not form part of any offer or contract. All measurements, areas and distances are approximate. The information and plans contained herein are believed to be correct, however, their accuracy is not guaranteed. The photographs show only certain parts of the property at the time they were taken. This offer is subject to change of price or other conditions, without prior notice.





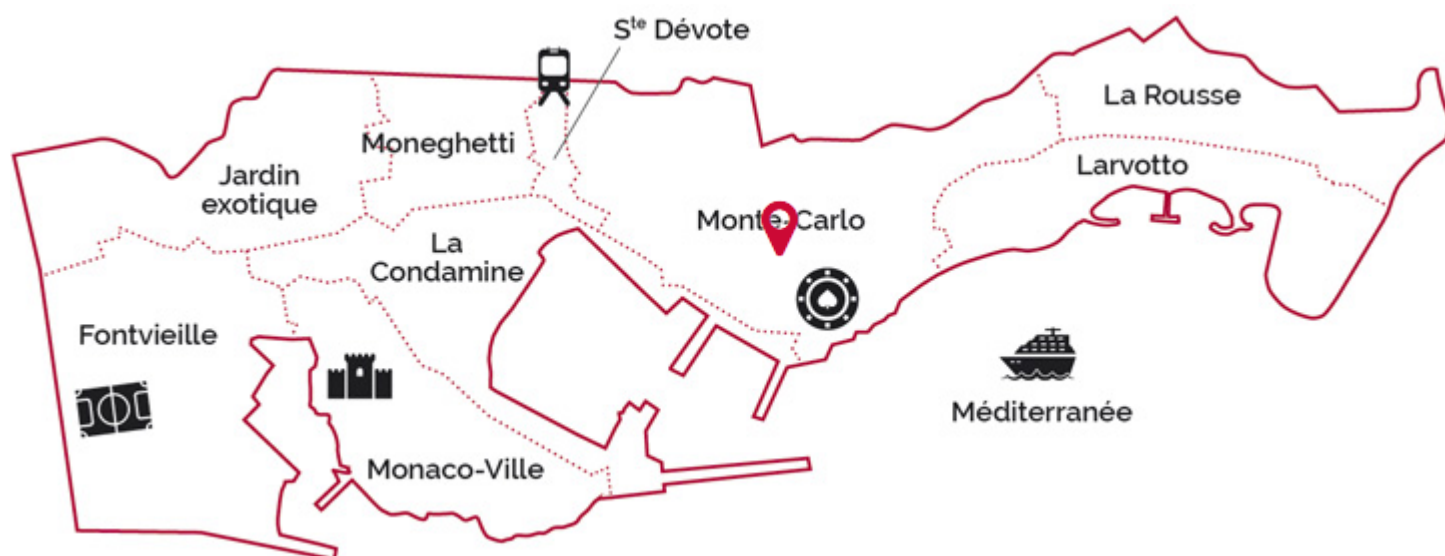
## Ideale Pied à terre nel Carré d'Or



This document does not form part of any offer or contract. All measurements, areas and distances are approximate. The information and plans contained herein are believed to be correct, however, their accuracy is not guaranteed. The photographs show only certain parts of the property at the time they were taken. This offer is subject to change of price or other conditions, without prior notice.



## Ideale Pied à terre nel Carré d'Or



This document does not form part of any offer or contract. All measurements, areas and distances are approximate. The information and plans contained herein are believed to be correct, however, their accuracy is not guaranteed. The photographs show only certain parts of the property at the time they were taken. This offer is subject to change of price or other conditions, without prior notice.