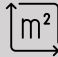








2 900 €/month

DESCRIPTIVE :

REF: LM1538

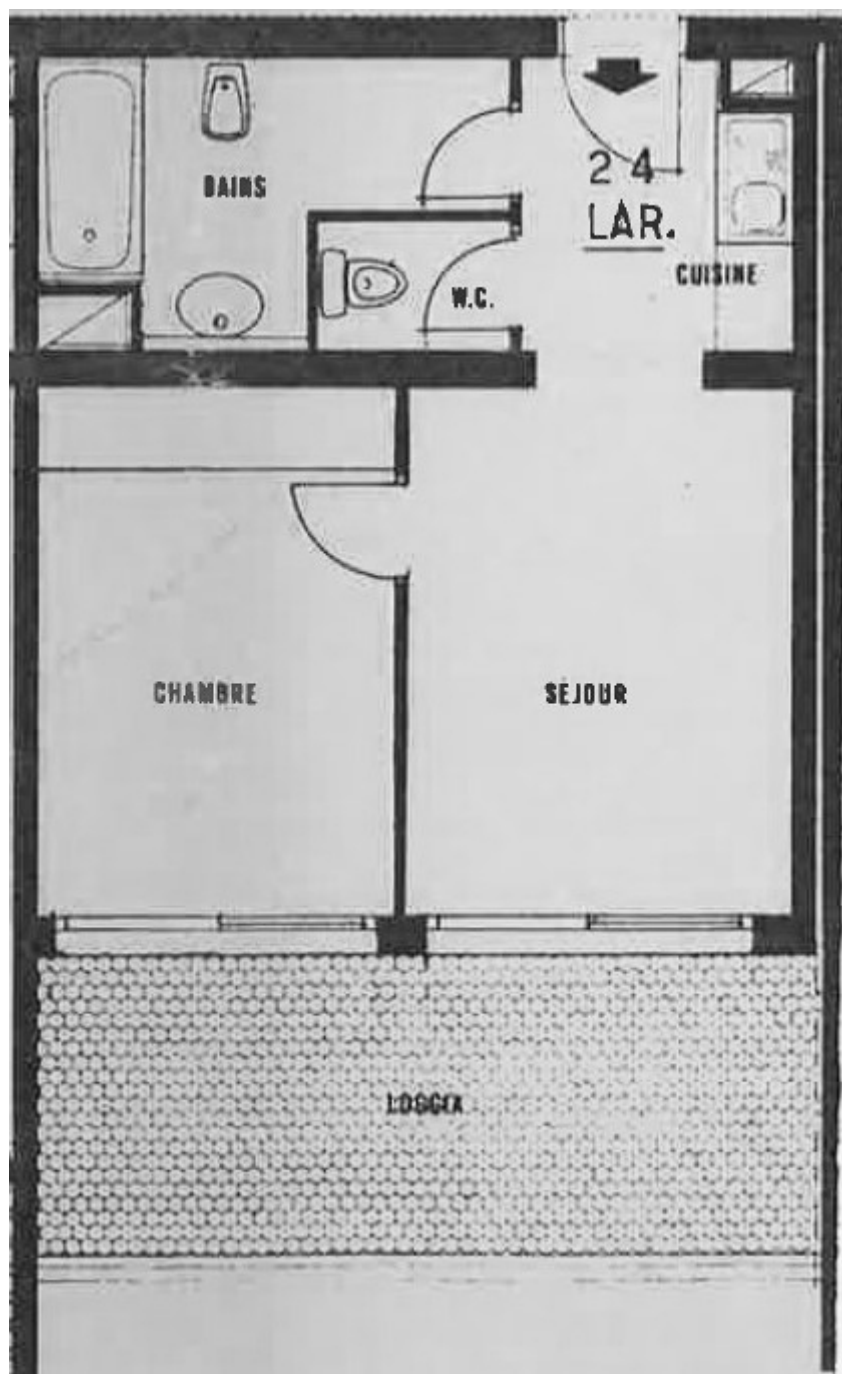
DETAILS	
	*59 m²
	2222222222222222 2222222222
	1
	Facing 22222
	22222 view
CHARGES	190 €/mois

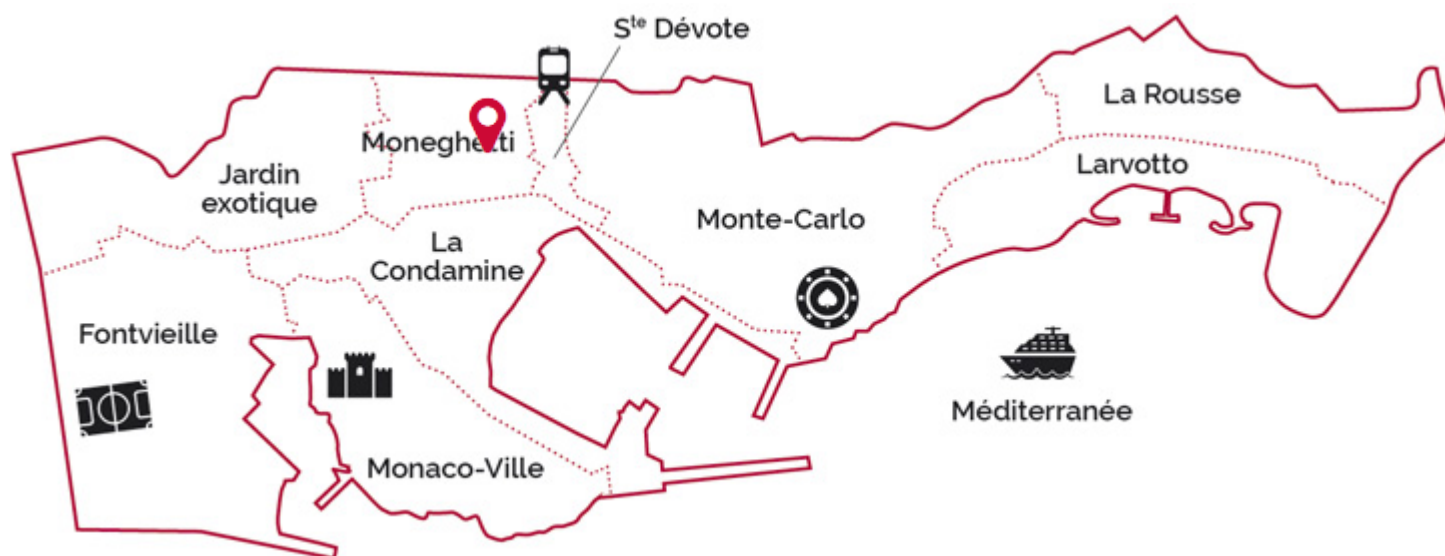
*Marketable area

This document does not form part of any offer or contract. All measurements, areas and distances are approximate. The information and plans contained herein are believed to be correct, however, their accuracy is not guaranteed. The photographs show only certain parts of the property at the time they were taken. This offer is subject to change of price or other conditions, without prior notice.

OLIVIERS

JARDIN EXOTIQUE





legal This document does not form part of any offer or contract. All measurements, areas and distances are approximate. The information and plans contained herein are believed to be correct, however, their accuracy is not guaranteed. The photographs show only certain parts of the property at the time they were taken. This offer is subject to change of price or other conditions, without prior notice.